

Field Reconnaissance Study

Street, Sidewalk, Sidepath & Curb Ramp Asset Condition Data

Adam Wason

Director, Department of Public Works

June 7 , 2022



Field Reconnaissance Data

- Survey projects conducted:
 - 2017-2018 (a big first)
 - 2022
- Condition data sets collected:
 - Street Pavement
 - Sidewalks/Sidepaths
 - Accessible Curb Ramps



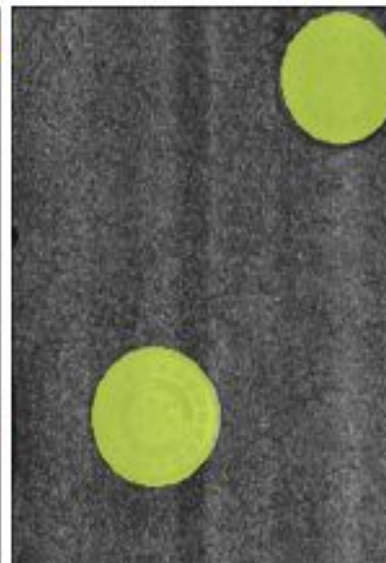
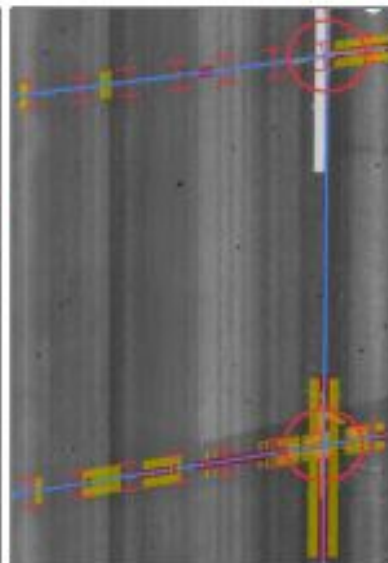
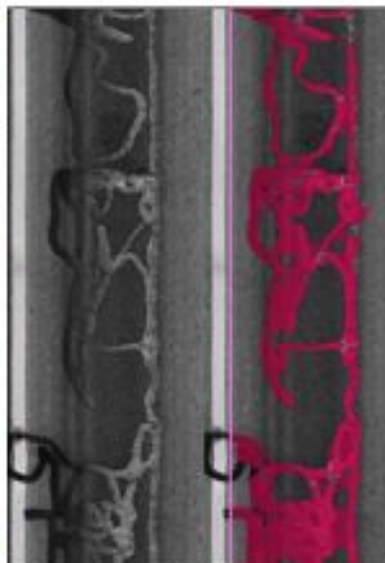
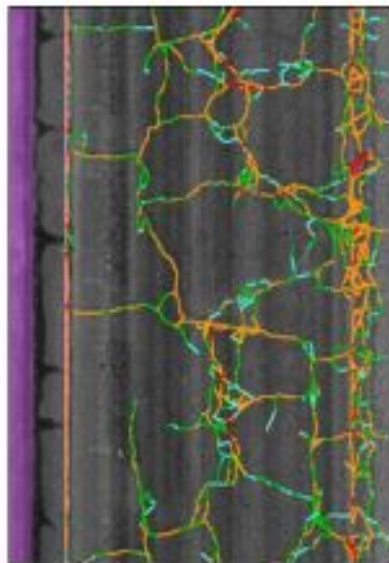
LCMS-2 PAVEMENT DISTRESS ANALYSIS

Cracks

Sealed cracks

Concrete Joints

Utilities



Quick Facts - Street Paving

- Streets and Bicycle lanes
- Pavement provides smooth, all weather surface
- Supports wide range of transportation types and users
- New ADA infrastructure required for paving



Street Assets - Types by Mileage

- **Streets:** 239 miles
- **Bicycle Lanes:** 39 miles
- **Sidepaths:** 22.9 miles
- **Sidewalks:** 251.3 miles



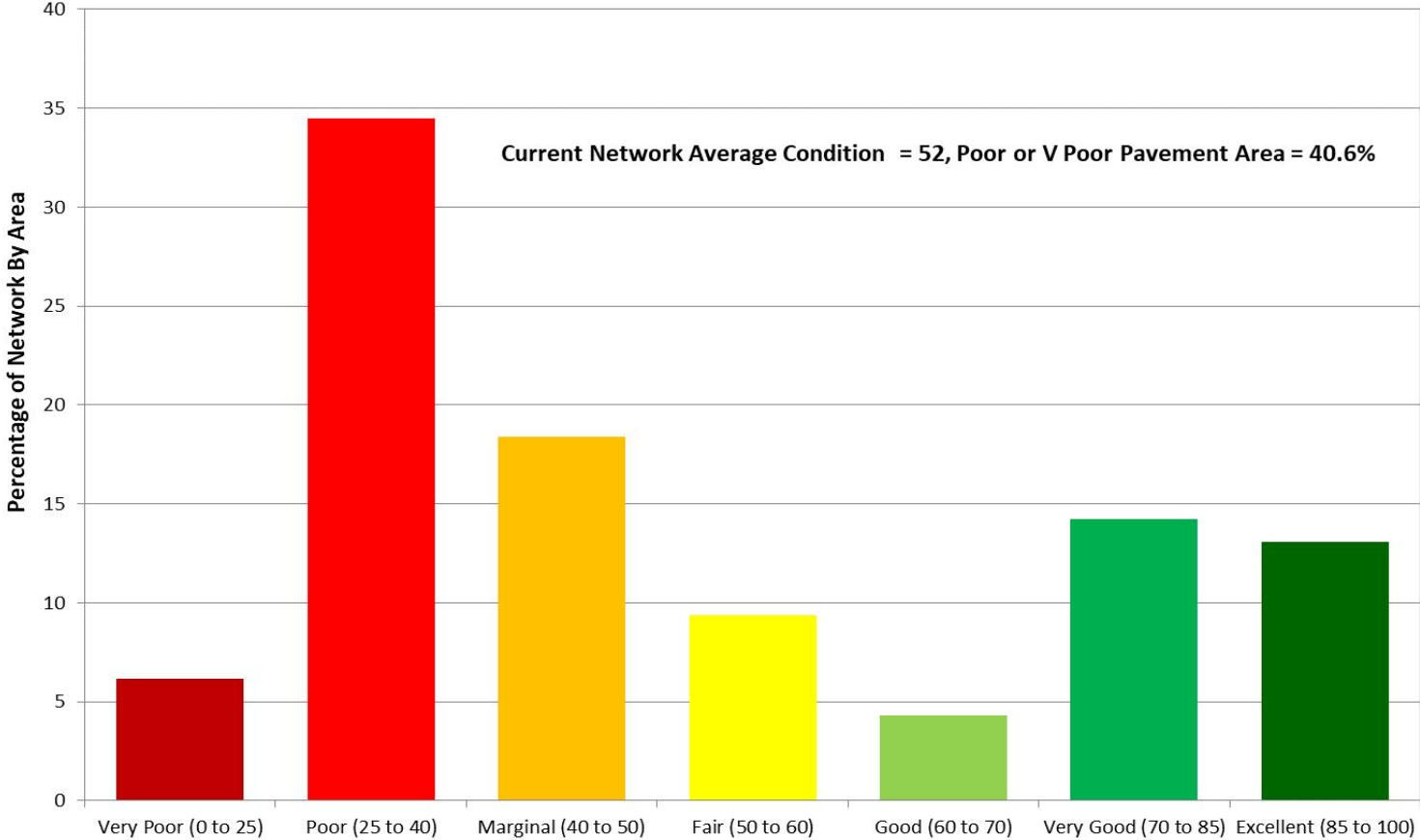
Street Assets - Types by Square Footage

- **Streets:** 6,662,937,600 sq. feet
- **Bicycle Lanes:** 1,087,257,600 sq. feet
- **Sidepaths:** 638,415,360 sq. feet
- **Sidewalks:** 7,005,841,920 sq. feet



Bloomington IN

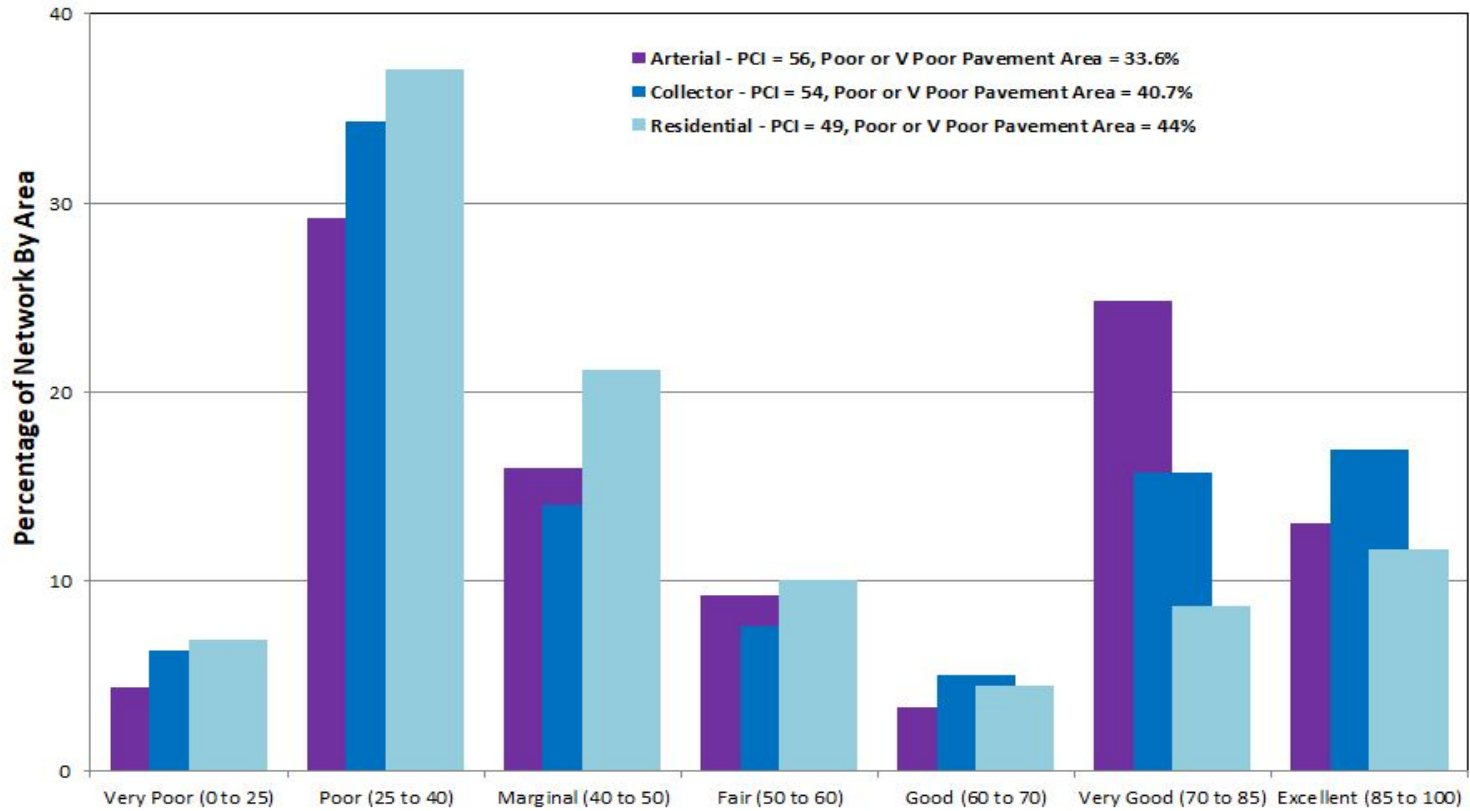
Current Pavement Condition Rating Using Descriptive Terms



Current Pavement Condition Index (CPCI) Using Descriptive Terms

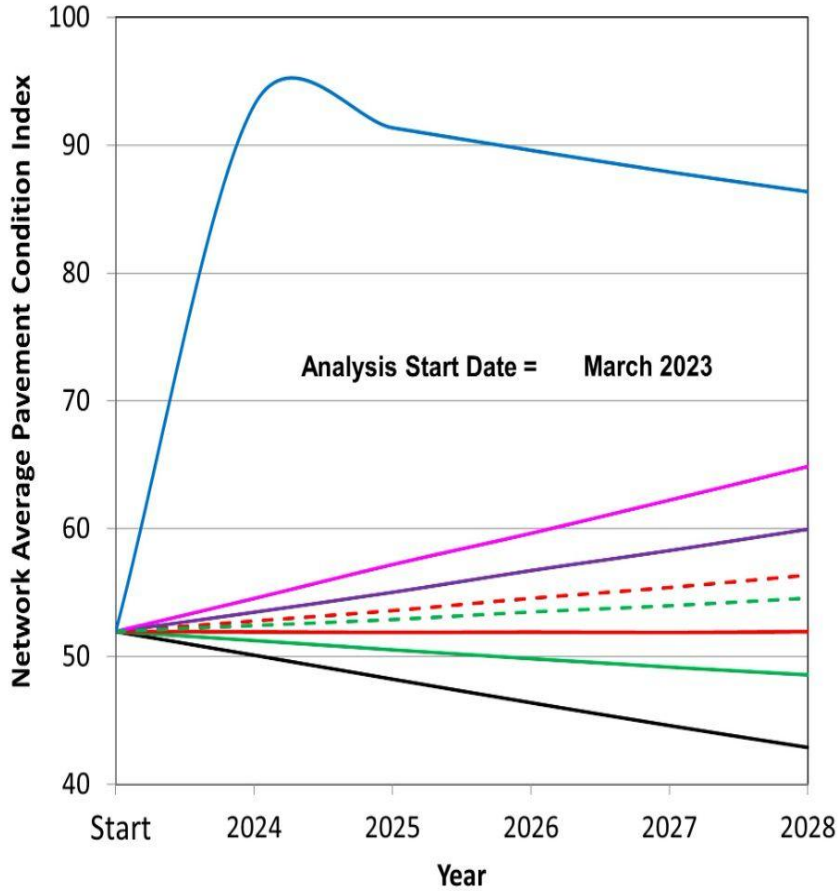
Current PCI Date = March 2023

Bloomington IN Current Pavement Condition Rating Using Descriptive Terms By Functional Class Group



Current PCI Date = March

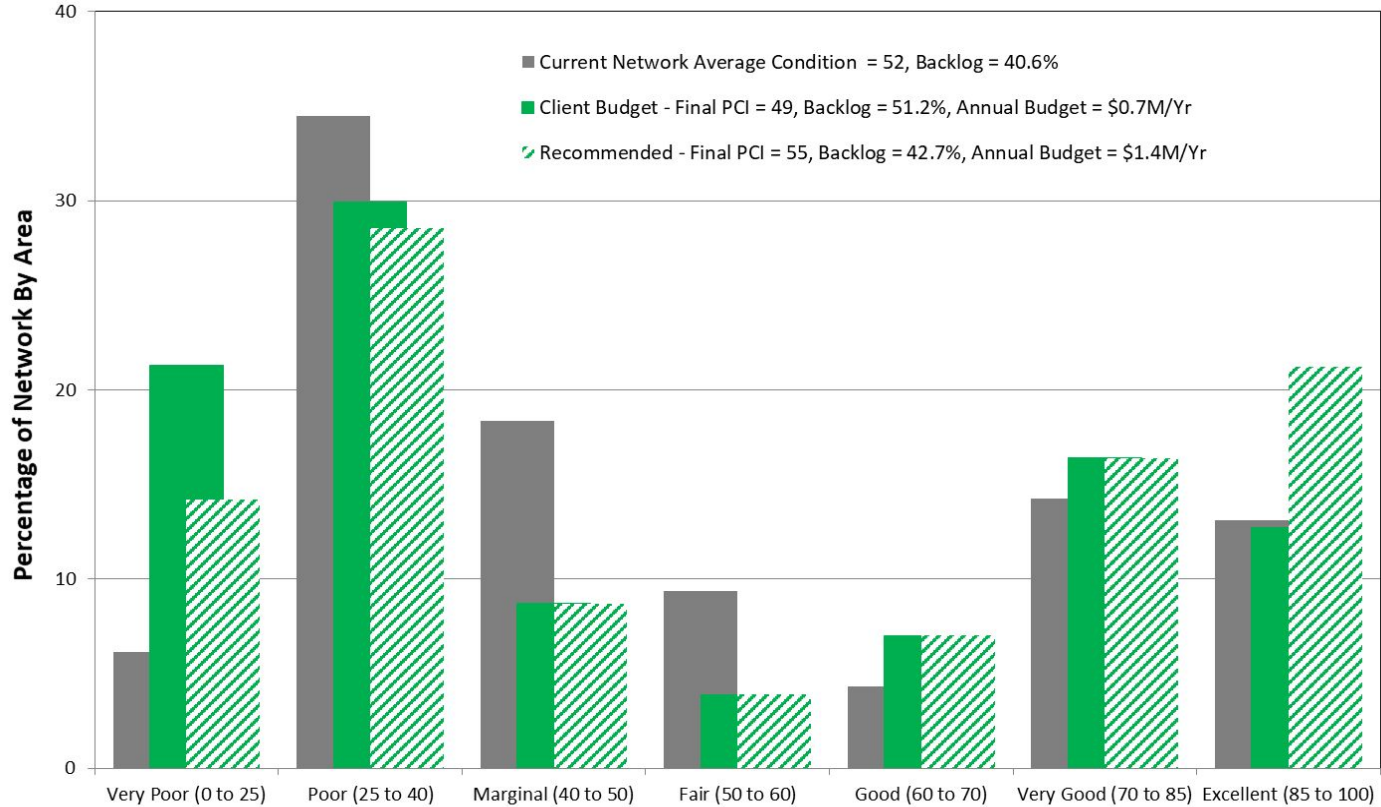
Pavement Condition Using Descriptive Terms



- Do Nothing - Final PCI = 43, Backlog = 59.1%, Annual Budget = \$0M/Yr
- Client Budget - Final PCI = 49, Backlog = 51.2%, Annual Budget = \$0.7M/Yr
- Steady State PCI - Final PCI = 52, Backlog = 46.4%, Annual Budget = \$1.1M/Yr
- - Steady State Backlog - Final PCI = 56, Backlog = 40.2%, Annual Budget = \$1.6M/Yr
- PCI Control - Final PCI = 60, Backlog = 35.1%, Annual Budget = \$2M/Yr
- PCI Target - Final PCI = 65, Backlog = 27.7%, Annual Budget = \$2.6M/Yr
- - Recommended - Final PCI = 55, Backlog = 42.7%, Annual Budget = \$1.4M/Yr
- Fix All - Final PCI = 86, Backlog = 0%, Annual Budget = \$6.04M/Yr

Bloomington IN

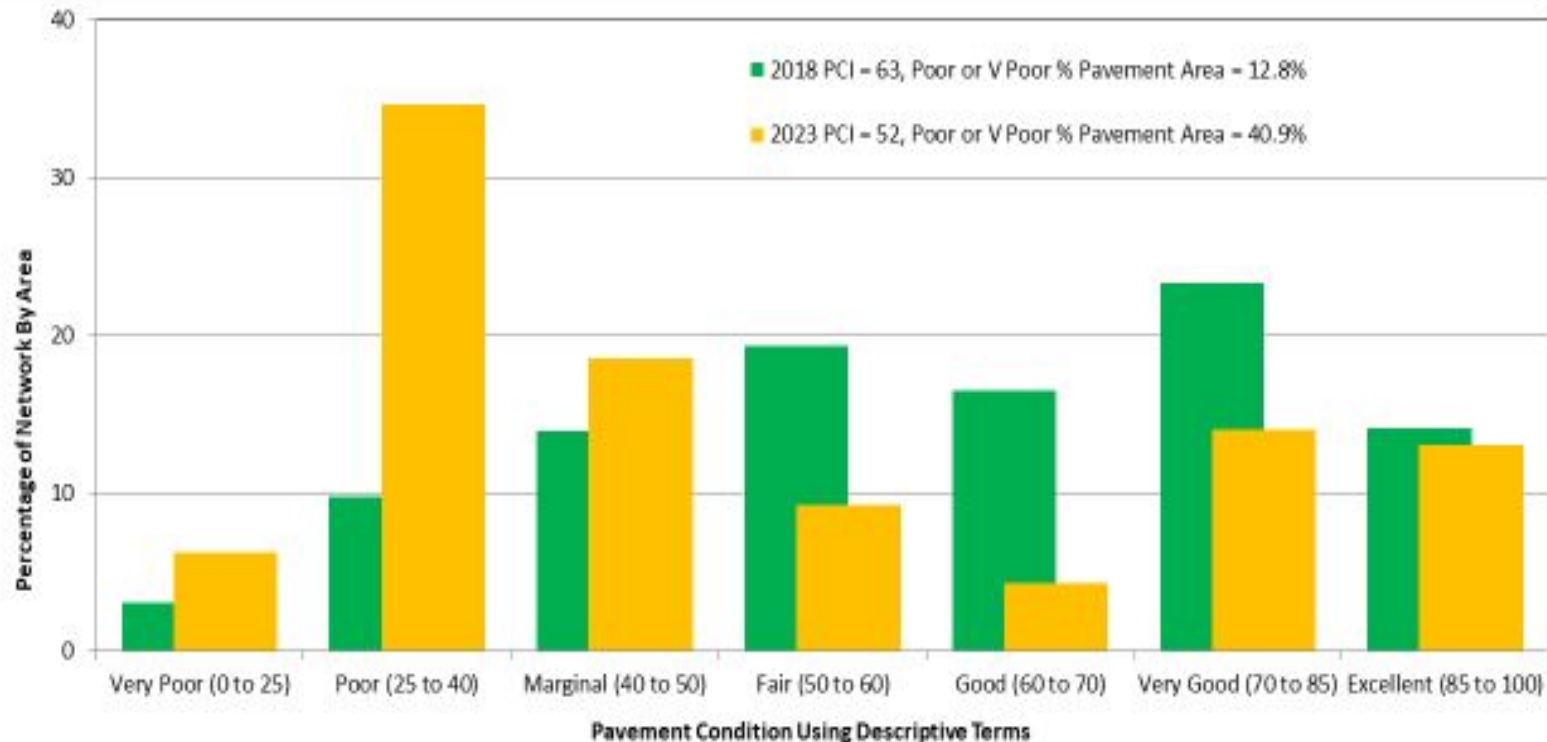
Current Condition Versus 5-Year Post Rehab Condition



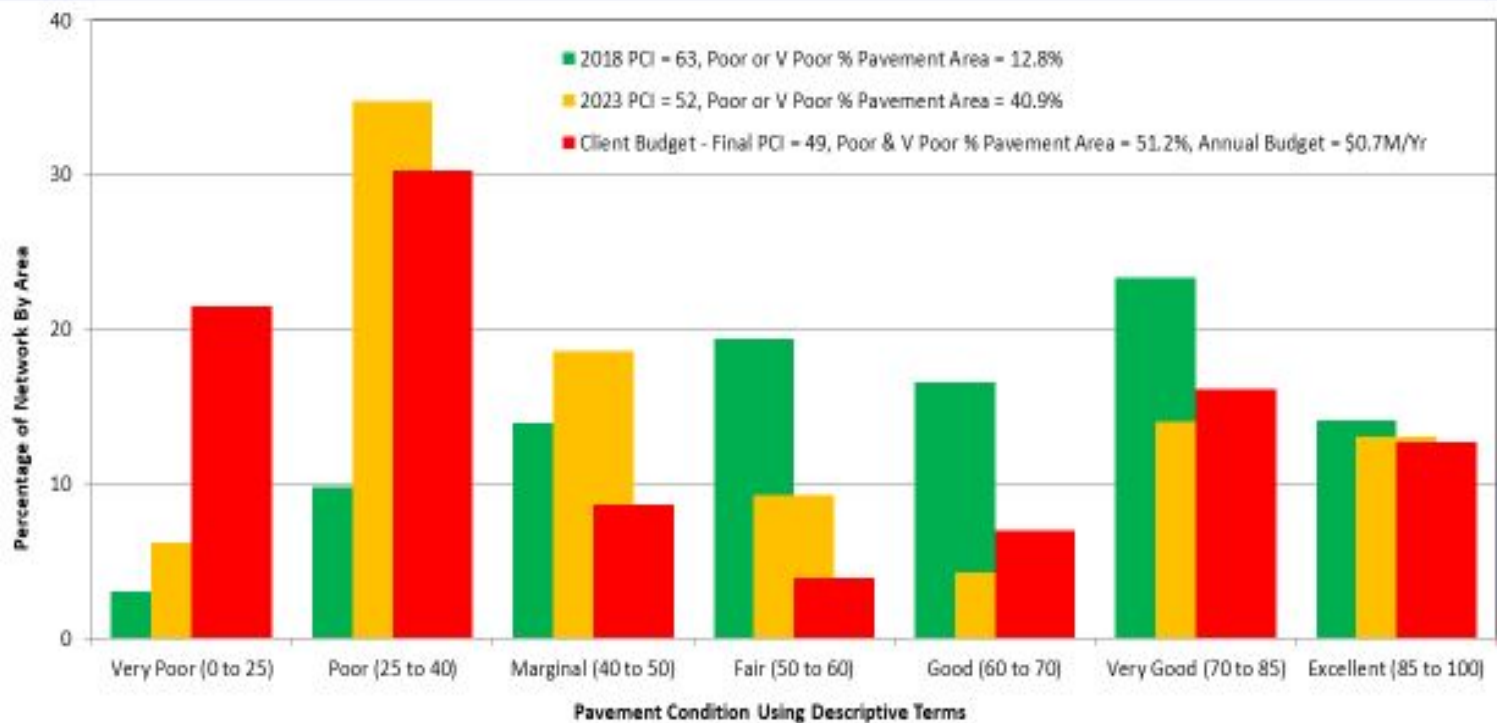
Pavement Condition Using Descriptive Terms

Current PCI Date = March 2023
Analysis Start Date = March 2023

2018 VS CURRENT CONDITION



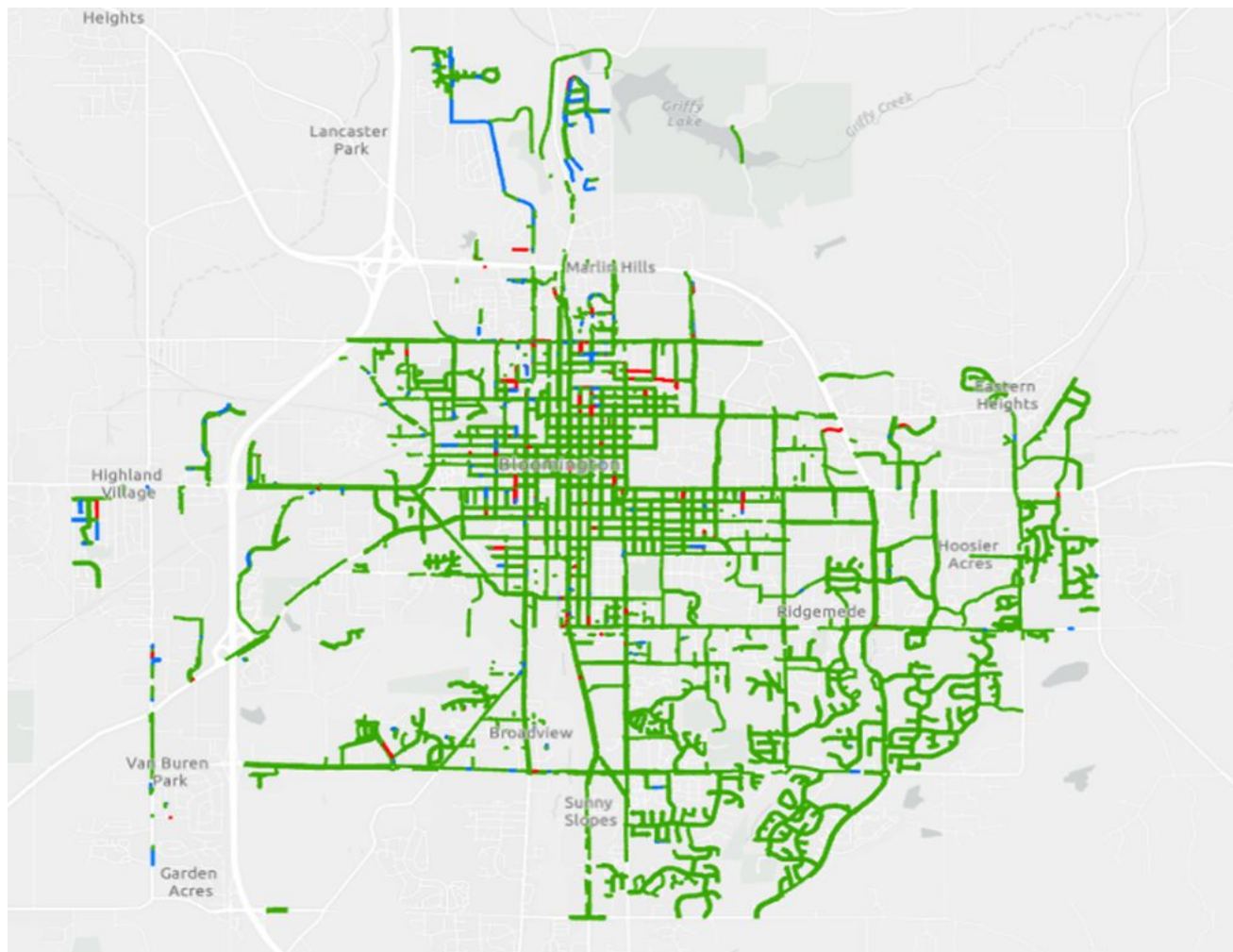
2018 VS CURRENT CONDITION VS 5-YEAR POST REHAB



Quick Facts - Sidewalks

- 251.3 miles of sidewalks
 - Concrete (91%)
 - Brick & Stamped Brick (1%)
 - Asphalt (8%)
- Condition Ratings
 - Good: 239.5 miles
 - Fair: 7.6 miles
 - Poor: 4.2 miles
 - No Sidewalk: 169.5 miles





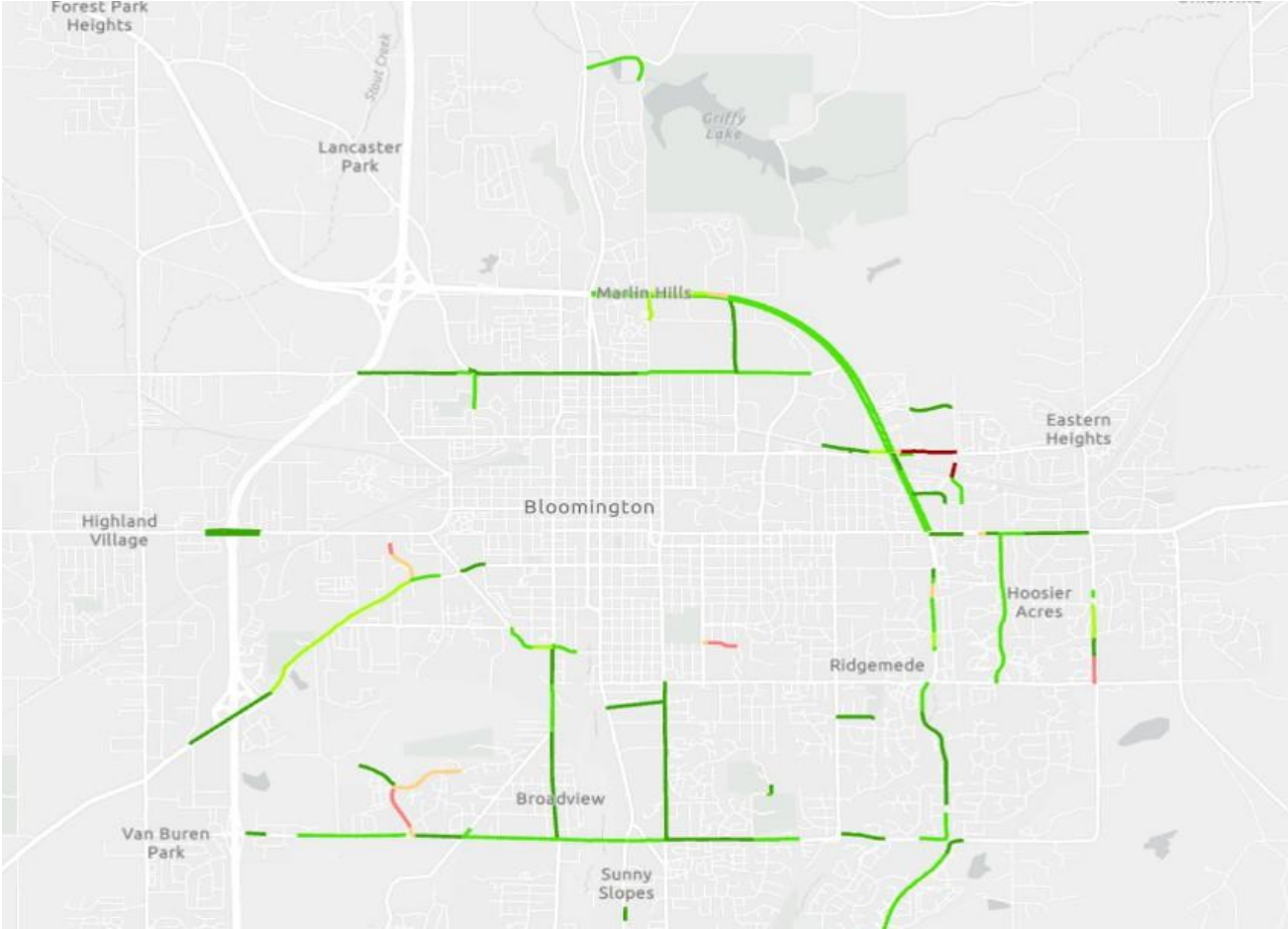
Quick Facts - Sidepaths

- 22.9 lane miles of public sidepaths
 - Adjacent to public ROW
 - Asphalt (21.5 miles)
 - Concrete (1.4 miles)

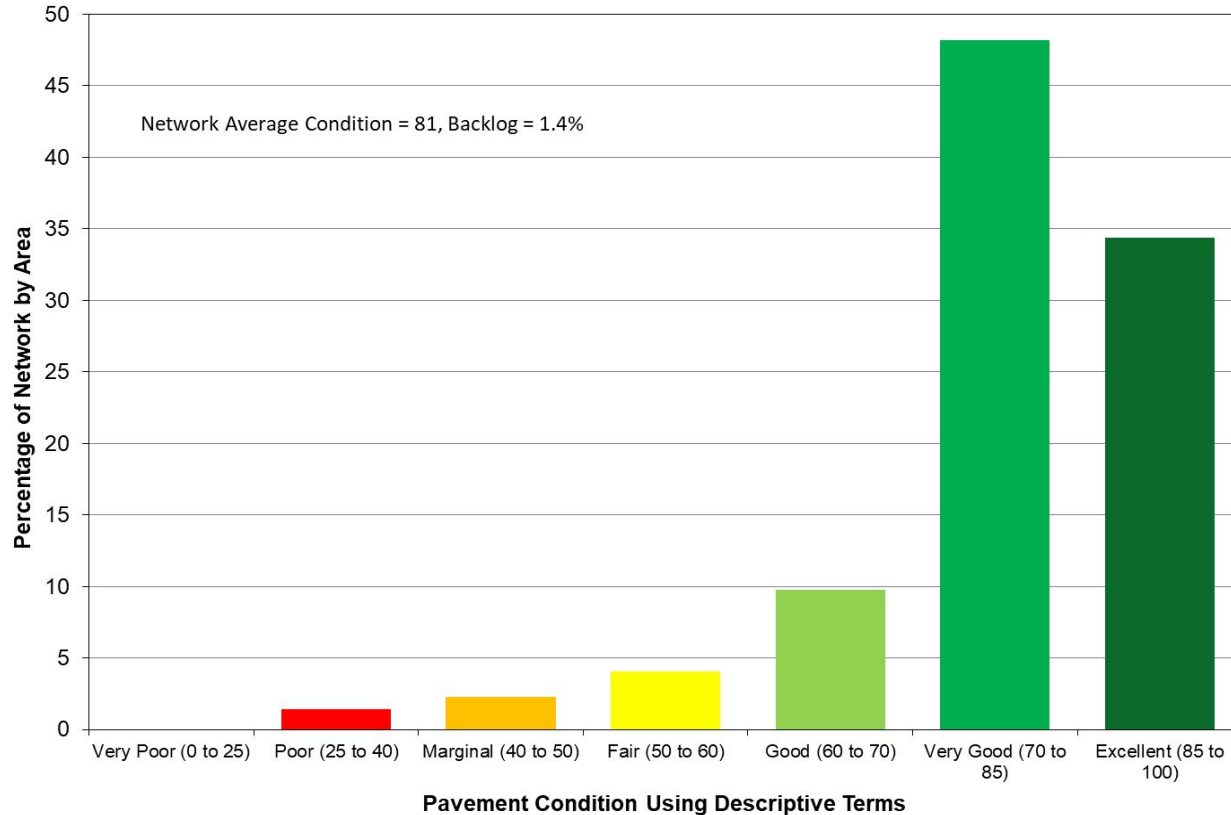
- Average Condition: 81 PCI



Sidepath Location/Condition Map



Sidepath - Pavement Condition Data



OVERVIEW OF RAMP TYPES



Type V

Ramp Required



Type IV

Three or More Deficiencies

Deficiencies: VIF = No Facility, Ramp Cross Slope > 2, Landing Length < 46 in, Landing width < 46 in, Landing Cross Slope > 2



Type III

Two Deficiencies

Deficiencies: VIF = Textured, Ramp Cross Slope > 2



Type II

One Deficiency

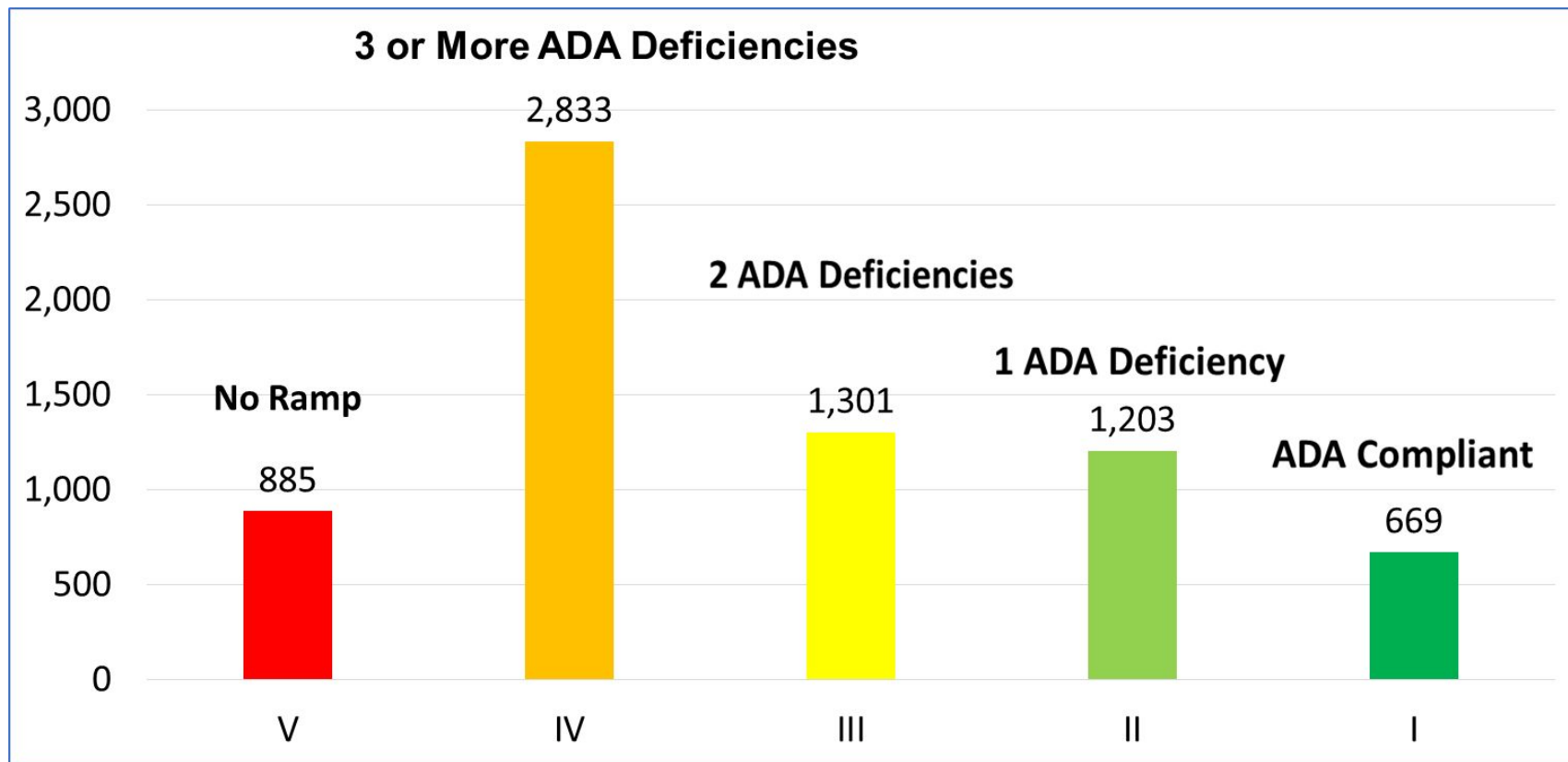
Deficiency: Landing Run Slope > 2



Type I

No Deficiencies, all measurements are within ADA compliance range and the VIF value is truncated domes

Accessible Curb Ramp Type Analysis



OVERVIEW OF RAMP CONDITIONS



Poor

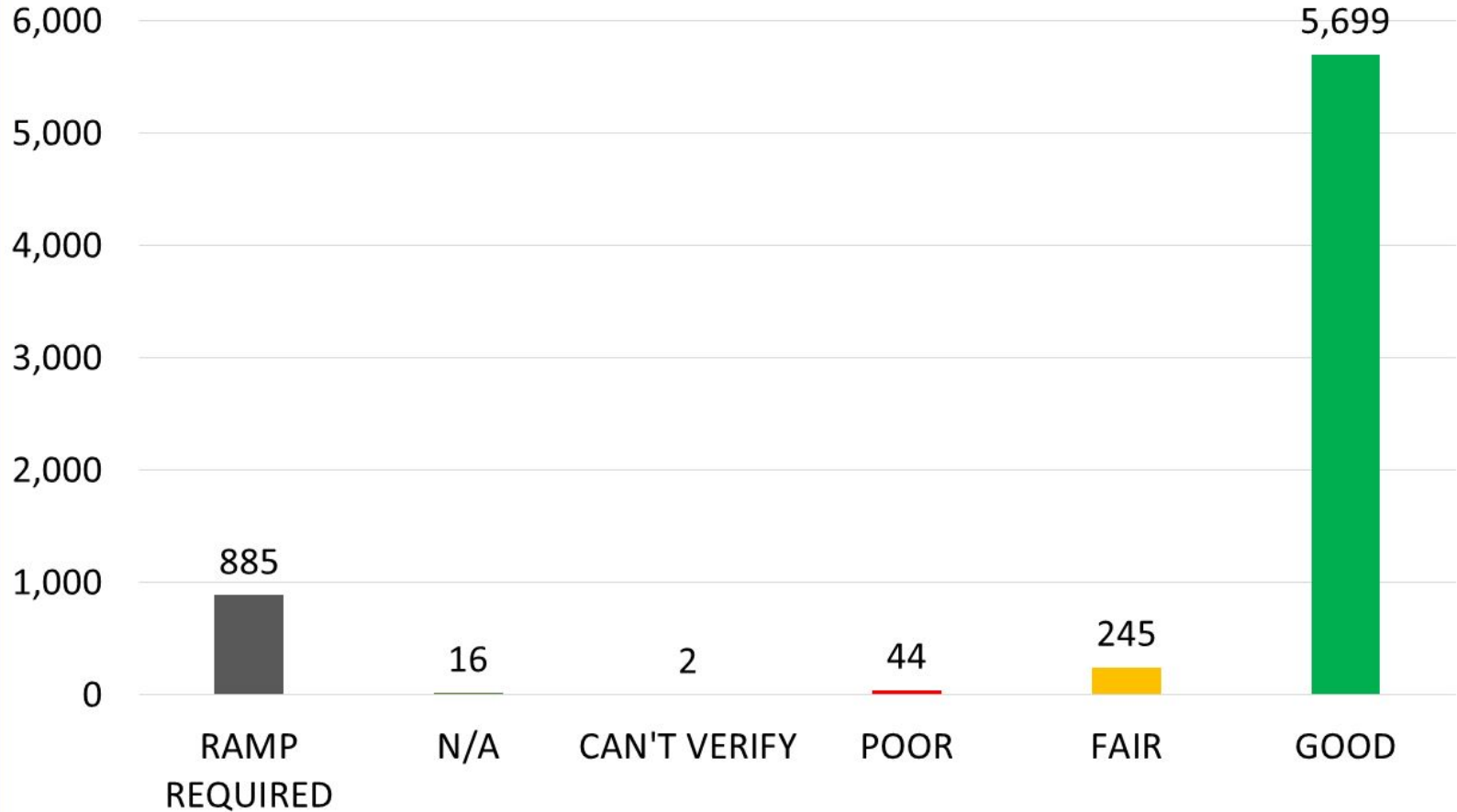


Fair



Good

Total Ramps by Condition



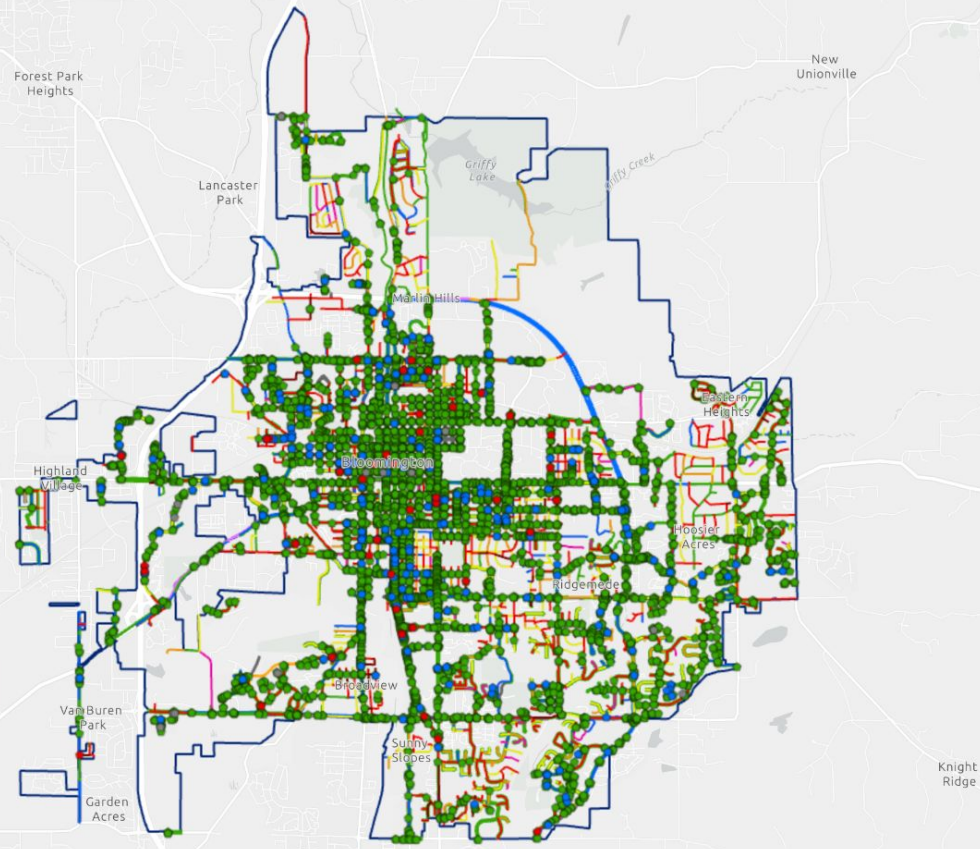
Project Next Steps

- Data collected:
 - Import to City asset management software
 - Uploading data to City GIS maps
 - B-Clear Data Portal - Available to the Public
 - <https://data.bloomington.in.gov/stories/s/uks5-36kc>



Search by address, intersec

Search by address, intersection, or street



Layer List

- Transportation Infrastructure Condition Data ...
 - Curb Ramps Condition Data ...
 - Good
 - Fair
 - Poor
 - No Rating
 - Street Condition Data ...
 - Excellent
 - Very Good
 - Good
 - Fair
 - Marginal
 - Poor
 - Very Poor
 - Sidewalk Condition Data ...
 - Excellent
 - Very Good
 - Good
 - Fair
 - Marginal
 - No Rating
 - Sidewalk Condition Data ...
 - Good
 - Fair
 - Poor
 - No Rating
 - Missing Infrastructure ...
 - Missing Curb Ramps ...