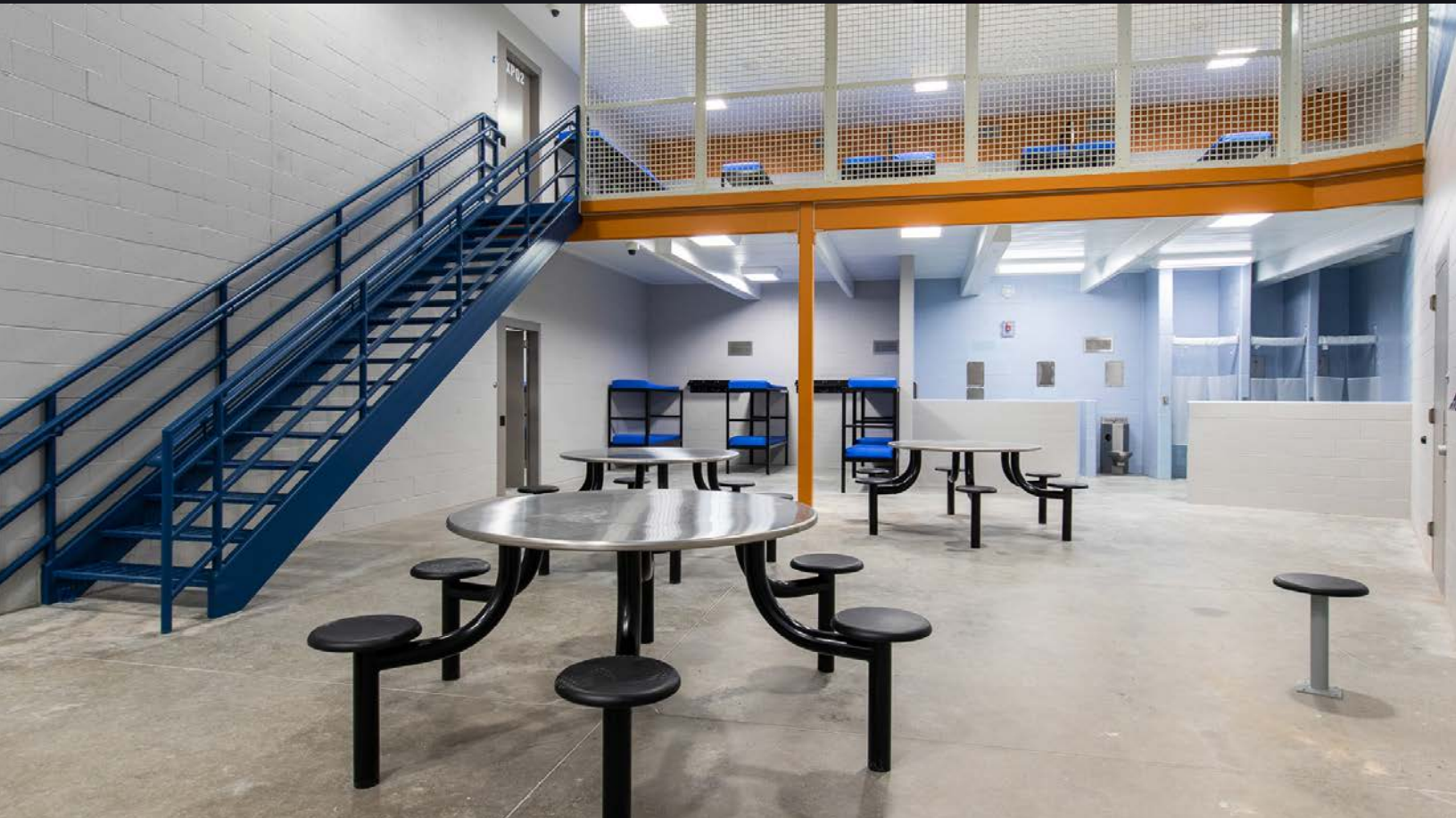




REQUEST FOR QUALIFICATIONS

PLANNING, ARCHITECTURE, ENGINEERING SERVICES FOR THE

# MONROE COUNTY JUSTICE COMPLEX



**RQAW CORPORATION**

8770 North Street, Ste. 110  
Fishers, IN 46038  
317.588.1798

**AUTHORIZED NEGOTIATOR**

Eric Weflen, AIA, NCARB  
Division Director of Facility Design  
317.517.8999  
eweflen@rqaw.com



**Corporate Headquarters**  
8770 North Street, Suite 110  
Fishers, Indiana  
317.588.1798

November 15, 2022

Monroe County Commissioners, C/O Legal Department  
100 W. Kirkwood Ave.  
Bloomington, IN 47404

**RE: Request for Qualifications for Monroe County Justice Complex Planning, Architecture, and Engineering Services**

RQAW is pleased to respond to the Request for Qualifications for the design and construction of the Monroe County Jail. We are one of the only architecture and engineering firms in the State of Indiana with nearly 70 years of experience. This longevity enables our design professionals to draw on a wealth of both personal and professional expertise, specifically in correctional and justice facilities. We have completed more than 150 criminal justice facilities, ranging from feasibility studies, additions/renovations, adaptive/reuse, and new facility designs.

Historically, jails were utilized to temporarily “warehouse” people who have been arrested and accused of a crime, until they were sentenced to prison or released. For decades, a safe jail was simply a facility that prevented escape and kept inmates from harming each other or staff, but, today, the idea of a safe jail is significantly different. Our modern, innovative designs not only meet those minimum standards but also provide more classification flexibility for an evolving population, care for both physical health and mental health issues, and promote rehabilitation. To better serve the justice-involved individuals of Monroe County, we have teamed up with Falcon, Inc., a nationwide consulting and management firm that focuses on the delivery of evidence-based healthcare and correctional practice for these individuals as well as those charged with their care and custody. Through the collaboration of Falcon's subject-matter expertise and RQAW's innovative jail designs, we are confident that we can deliver a jail that has the potential to decrease recidivism, reduce cost to the County, and provide a more humane and effective approach to the treatment of constituents.

With our team's expertise in building consensus, RQAW and Falcon will be able to lead your team through a process, resulting in a project that not only meets your immediate and projected space needs but also achieves your overall goal of addressing mental and physical health needs while, ultimately, enhancing rehabilitation. Together, RQAW and Falcon have the experience and expertise to assist you in your vision to create opportunities to successfully reacclimate justice-involved individuals back into society. This shift in focus is vital in minimizing the justice footprint and delivering a final product that results in a facility that meets the mission of today's correctional facilities. Monroe County deserves a responsive team of experts tailored to this specific project.

We look forward to speaking with you further about this opportunity. If you have any questions, please feel free to contact me at 317.517.8999 or at eweflen@rqaw.com.

Sincerely,

A handwritten signature in black ink, appearing to read "Eric Weflen".

Eric Weflen, AIA, NCARB  
Division Director of Facility Design

**VINCENNES OFFICE**

328 N. 2nd St., Ste. 304  
Vincennes, IN 47591

**CORPORATE HEADQUARTERS**

8770 North St., Ste. 110  
Fishers, IN 46038

**LA PORTE OFFICE**

703 Michigan Ave.  
La Porte, IN 46350

# FIRM BACKGROUND



**SINCE 1954,  
RQAW HAS  
BEEN HELPING  
OUR CLIENTS  
BUILD THRIVING  
COMMUNITIES.**

We are a full-service architecture and engineering firm that provides a wide array of services ranging from architectural design to complex infrastructure projects. With every design, we strive to exceed our client's expectations while delivering projects on time and on budget.

With almost 70 years of experience and 30+ years of justice facility project experience, our highest priority has always been developing lasting relationships and providing exceptional customer service. We are committed to bringing our client's vision to life, from initial concept to final inspection. With a full array of in-house services, we are able to use practical solutions, innovative design, and high-quality project delivery, and we will collaborate with you to propel your project forward and positively impact your community.

## YOUR JAIL DESIGN EXPERTS

### ENHANCING REHABILITATION THROUGH EVIDENCE-BASED PRACTICES

RQAW's Justice Studio consists of a highly experienced team of planning and design professionals. We have completed more than 150 correctional projects, including county jails and justice centers. Additionally, our extensive experience with designing enhanced pre-processing and health assessment areas, therapeutic spaces, and behavior modification programming blocks will bring added value in reaching the County's goal of a reduced recidivism rate.

**70%**

OF RQAW'S TOTAL ARCHITECTURAL DESIGN WORK IS IN **DETENTION**

NEARLY

**6,000 beds**

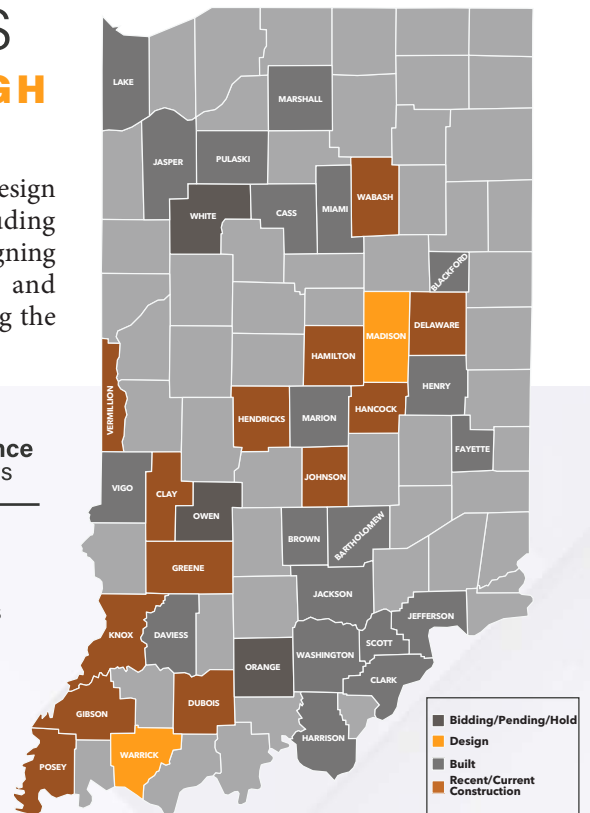
designed in the last five years

**30+** years of **firm experience** with detention projects



**OVER 448,000,000** in detention related projects in the last five years

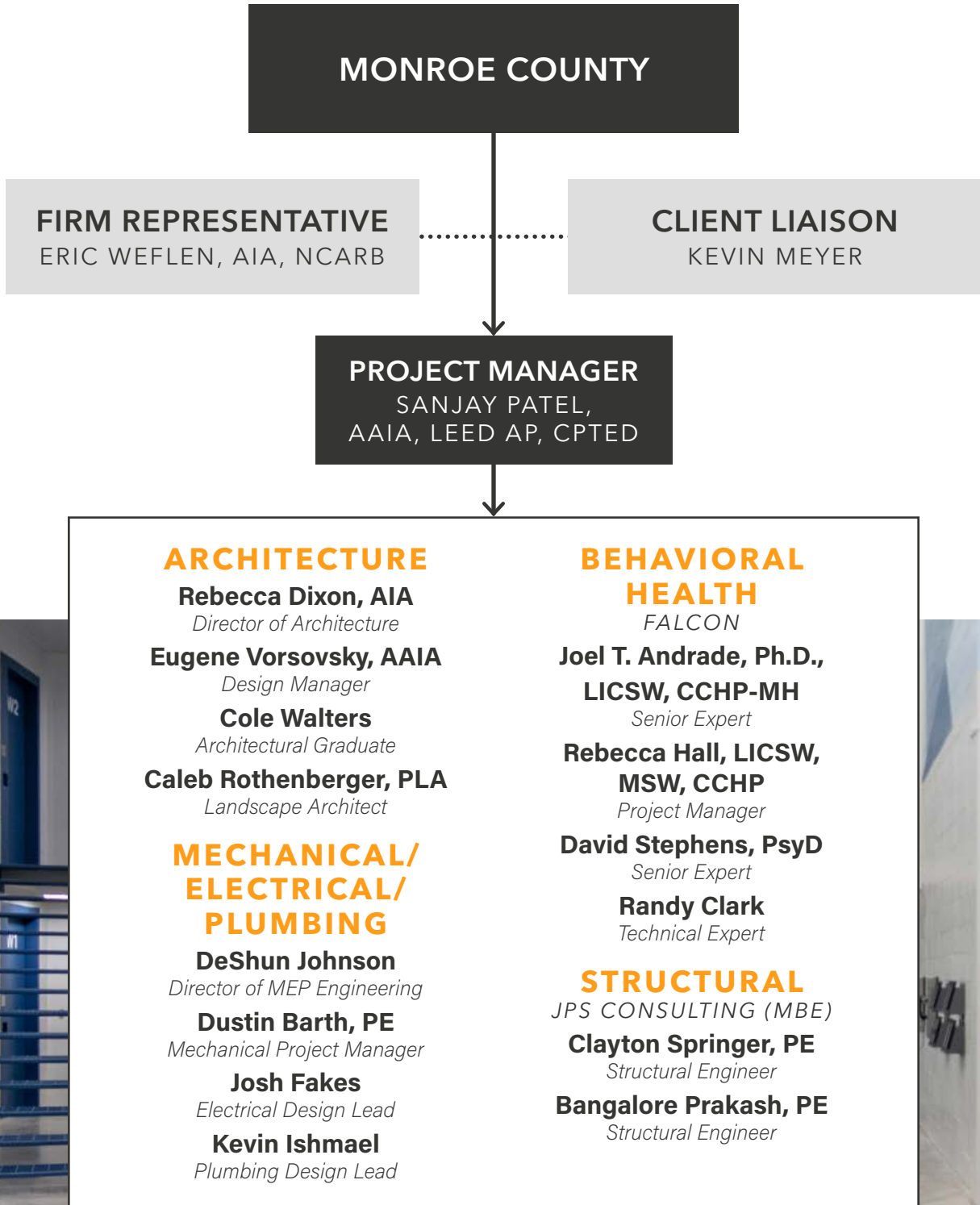
**200+** years of **personnel experience** with detention projects



# ORGANIZATIONAL CHART

Our team has a history of developing innovative solutions that accommodate our clients' needs. Our extensive experience with justice facilities allows us to consistently deliver creative, tailored solutions that meet project goals.

Your project is unique; it will require a blend of expertise as well as a deep understanding of modern facility security, space planning, and best-practice models of healthcare delivery and rehabilitation. We have formed a dedicated team for your new jail, comprising justice-focused architectural designers, MEP designers, structural engineers, and progressive correctional mental health specialists. This team can deliver the necessary expertise to provide a jail that is both efficient and meaningful to Monroe County.



# PROJECT TEAM



**ERIC  
WEFLEN,  
AIA, NCARB**  
FIRM REPRESENTATIVE  
& DIVISION DIRECTOR  
OF FACILITY DESIGN

Eric is a Principal and the Division Director of Facility Design at RQAW with over 15 years of experience designing and coordinating in all architectural-phase services. Eric's experience includes conducting comprehensive and feasibility studies, facility design, preparation of contract bid documents, and specifications for municipal, public safety, and correctional facilities, as well as industrial, institutional, private, and governmental projects. He has extensive experience in leading developments through all stages of design and construction and is committed to a client-focused teamwork approach that has been very successful in delivering projects on time and under budget. Representing the next generation of RQAW leadership, Eric places an emphasis on energy-efficient building systems that have a low environmental impact and superior life-cycle value. He takes pride in every aspect of his work, from exceptional design to quality documentation.



**KEVIN  
MEYER**  
CLIENT  
LIAISON

Kevin is a former Knox County Commissioner and Councilman who has worked at RQAW for the past 10 years. His background as a councilman allows him to understand and address many needs such as being budget conscious. Kevin utilizes his networking expertise and strong marketing skills to ensure a strong client relationship. His interpersonal communication skills, client-focused approach, and ability to maintain relationships make him an exceptional business partner for your project. He has experience working on multiple jails, past and present, including Greene, Knox, Posey, and Vermillion Counties. While project success is on his mind, he is focused on his client first.



**SANJAY  
PATEL, AAIA,  
LEED AP, CPTED**  
PROJECT MANAGER,  
JUSTICE STUDIO  
DESIGN LEAD

Sanjay leads the RQAW Justice Studio and has played an integral role in every RQAW detention project for the last 32 years. His leadership and expertise have led to RQAW jail design innovations, including direct contact ports in central control and self-contained housing pods with all support components. Further, Sanjay has developed a flexible systematic approach to control bed counts and costs. This has been instrumental in RQAW's success in hitting early established construction budgets. His excellent communication and collaborative approach results in solutions that are tailored to a client's specific needs and budget.



**REBECCA  
DIXON, AIA**  
DIRECTOR OF  
ARCHITECTURE

With over 30 years of experience, Rebecca brings a wealth of understanding to the table as Director of Architecture. She has extensive experience in design and project management and enjoys using her creativity and technical knowledge to help bring her clients' visions to fruition. Blending ingenuity with technology has always fueled her passion for architecture. Rebecca emphasizes collaboration and active listening to ensure that client's goals are met, and the project is completed on time and within budget.

# PROJECT TEAM



**EUGENE  
VORSOVSKY**

DESIGN  
MANAGER

Eugene brings over 15 years of diverse architectural experience as a Project Architect and Building Information Modeling (BIM) Coordinator. His primary role is working closely with clients and engineers to develop high quality coordinated projects ranging in size and complexity, while developing and implementing quality and BIM standards. In addition, Eugene leads projects through their full process of design and construction phases, including architectural concept design, design development, construction documentation, and construction administration for the judicial market.



**COLE  
WALTERS**

ARCHITECTURAL  
GRADUATE

Cole possesses a fresh perspective and an extensive knowledge of architectural software. Since graduating from Ball State University, he has worked in RQAW's Justice Studio and been involved in projects from design all the way through construction. Cole's responsibilities range from schematic design through construction documents, renderings, space evaluations, judicial studies, project presentations, and preliminary design production.



**CALEB  
ROTHENBERGER,  
PLA**

LANDSCAPE  
ARCHITECT

Caleb is a seasoned Landscape Architect with a strong background in master planning, detailed site design, and municipal planning. Caleb has a diverse background ranging from parks and greenways to community planning and regional planning. He has led multiple projects from concept to design and through final construction. Caleb's knowledge in overall master planning and coordination of the approval process, in addition to his expertise in understanding and working with regulatory requirements, enables him to provide innovative and workable design solutions that are recognized by developers, builders, and subconsultants.



**DESHUN  
JOHNSON**

MEP TEAM  
LEAD

DeShun is RQAW's Director of MEP Engineering, providing a high level of expertise and leadership for our mechanical, electrical, and plumbing team. He is responsible for overseeing and coordinating production, quality control, and the expansion of target markets. Throughout his 20+ year career, he has contributed to a multitude of architectural and engineering projects, with construction budgets ranging from \$500k to \$200M. He has played a vital role in numerous county correctional facilities as well as mental health and judicial facilities. DeShun specializes in electrical distribution systems, lighting design, security, telecommunications, and fire alarm systems for numerous building types and utilizes best practice engineering methods to provide expert technical guidance.

# PROJECT TEAM

---



**DUSTIN  
BARTH, PE**

MECHANICAL  
DESIGN LEAD

Dustin has more than four years of experience providing mechanical engineering design on a wide variety of projects. As a member of the MEP team, Dustin brings well-rounded experience with an emphasis on mechanical systems of commercial buildings. In the past, he has taken the role of designing mechanical and plumbing systems for jails, fire stations, assisted living/skilled nursing facilities, office buildings, and schools. Dustin's exposure to multiple types of commercial job sites provides him the foresight to design with efficiency and practicality in mind.



**JOSH  
FAKES**

ELECTRICAL  
DESIGN LEAD

Josh has 15 years of experience and an electrical engineering degree from Rose-Hulman Institute of Technology. Josh is skilled in coordinating between clients, other design disciplines, and contractors to develop successful projects. He understands both the theoretical and applied side of design and often conducts field surveys. Josh applies his knowledge of codes and construction to develop electrical system designs including power, lighting, telecommunications, security, and fire alarm systems. His exposure to a wide variety of building and project types greatly impacts the success of each project.



**KEVIN  
ISHMAEL**

PLUMBING  
DESIGN LEAD

Kevin is a senior plumbing designer with over 24 years of experience. Kevin has designed a variety of project types ranging from historic, commercial, mixed-use, health care, and higher education. He has strong project management skills in communication, team management, and conflict resolution that are essential for the success and time management of every project. Kevin is a highly motivated team player who interacts productively with clients and design teams making him a great asset to the RQAW team.

# PROJECT TEAM

## RELEVANT RQAW STAFF EXPERIENCE:

### **Clay County Jail Addition & Renovation**

*Brazil, IN*

### **Wabash County Jail Addition & Renovation**

*Wabash, IN*

### **Daviess County Jail Addition & Renovation**

*Washington, IN*

### **Gibson County Jail**

*Princeton, IN*

### **Vermillion County Jail**

*Hillsdale, IN*

### **Hendricks County Jail**

*Danville, IN*

### **Knox County Jail Addition & Renovation**

*Vincennes, IN*

### **White County Jail & Sheriff's Office**

*Monticello, IN*

### **Owen County Jail**

*Spencer, IN*

### **Warrick County Jail**

*Boonville, IN*

### **Dubois County Justice Campus**

*Jasper, IN*

### **Marshall County Jail**

*Plymouth, IN*

### **Johnson County Jail**

*Franklin, IN*

### **Hancock County Jail**

*Greenfield, IN*

### **Delaware County Justice Center**

*Muncie, IN*

### **Hamilton County Jail**

*Noblesville, IN*

### **Greene County Jail**

*Bloomfield, IN*

### **Posey County Jail**

*Mt. Vernon, IN*

### **Miami County Jail**

*Peru, IN*

### **Jackson County Judicial Center**

*Brownstown, IN*

### **Washington County Justice Center**

*Salem, IN*

### **Scott County Jail**

*Scottsburg, IN*

### **Marshall County Jail**

*Plymouth, IN*

### **Jasper County Jail**

*Rensselaer, IN*

### **Cass County Jail**

*Logansport, IN*

### **Johnson County Jail**

*Franklin, IN*

# RQAW TEAM CAPACITY

## CURRENT JUSTICE STUDIO DESIGN PROJECTS

- WARRICK COUNTY JAIL, BOONVILLE, IN
- MADISON COUNTY JAIL, ANDERSON, IN
- WHITE COUNTY COMMUNITY CORRECTIONS & WORK RELEASE CENTER, MONTICELLO, IN
- COMMUNITY ALTERNATIVE SENTENCING CENTER, FINDLAY, OH

## CURRENT JUSTICE STUDIO CONSTRUCTION PROJECTS

- GIBSON COUNTY JAIL, PRINCETON, IN
- HENDRICKS COUNTY JAIL, DANVILLE, IN
- VERMILLION COUNTY JAIL, HILLSDALE, IN
- WABASH COUNTY JAIL, WABASH, IN
- DUBOIS COUNTY JUSTICE CAMPUS, JASPER, IN
- KNOX COUNTY JAIL ADDITION & RENOVATION, VINCENNES, IN



# PROJECT TEAM



## BEHAVIORAL HEALTH SUBCONSULTANTS



**JOEL T.  
ANDRADE, PH.D.,  
LICSW, CCHP-MH**  
PRINCIPAL & SENIOR  
EXPERT, FALCON

Dr. Andrade is well-seasoned with over 25-years Correctional Behavioral Health experience both in clinical and leadership positions. He has worked as a direct line forensic and correctional clinician as well as the Behavioral Health Director for a state Department of Correction. Dr. Andrade has also served as the Vice President/Director of Behavioral Health for a national correctional healthcare provider for over 10 years where he oversaw behavioral health services in over a dozen Departments of Correction and dozens of county jails throughout the United States.



**REBECCA  
HALL, LICSW,  
MSW, CCHP**  
PROJECT  
MANAGER, FALCON

Rebecca brings more than 15 years of experience delivering direct care and administrative healthcare services within a correctional setting. Ms. Hall has experience providing technical and operational support for the implementation of both medical and behavioral health services for patients who are incarcerated. She brings clinical expertise in the treatment of substance use disorders, major mental illness, and co-occurring conditions, as well as expertise in program development and evaluation.



**DAVID  
STEPHENS, PSYD**  
SENIOR EXPERT,  
FALCON

Dr. David Stephens is a correctional mental health expert, with over 20 years of high-level leadership, academic and consulting experience. Dr. David Stephens was the Chief of Behavioral Health Services for three State Departments of Correction (DOC), varying in size from several thousand inmates to over 30,000 inmates, in 27 prison facilities. In these state DOC systems, Dr. Stephens achieved and maintained National Commission on Correctional Health Care (NCCHC) and American Correctional Association (ACA) accreditation in every facility with no mental health findings in any accreditation audit. He was responsible for obtaining the first-ever ACA accreditation for an inpatient dual diagnosis treatment program in a prison system in the United States.



**RANDY  
CLARK**  
TECHNICAL EXPERT,  
FALCON

Randy worked for the Collin County Sheriff's Office in McKinney, Texas from 1979 to 2012 where he held numerous positions ranging from Detention Officer, Deputy Sheriff Patrol, Criminal Investigator, first-line through mid-level supervisory positions, and in 2012 was in the position of Assistant Chief/Detention Administrator for a 1,298-bed Direct Supervision County jail. He served on the Design Team, Logistics Team, and as Transition Coordinator from 1987 to 1994 during the planning, design, and construction of the current Collin County Detention Facility and Sheriff's Office. He supervised daily activities on behalf of the Sheriff's Office for two additional jail expansions between 1997-2007.

# PROJECT TEAM



## BEHAVIORAL HEALTH SUBCONSULTANTS

### RELEVANT FALCON STAFF EXPERIENCE:

**Franklin County Jail, Expansion & Program Design**

*Franklin County, OH*

**Sonoma County Jail, Program Development & Behavioral Health Unit**

*Sonoma County, CA*

**Contra Costa West County Re-Entry and Treatment Facility, Program Development & Design**

*Contra Costa County, CA*

**Jackson County Jail, Healthcare Evaluation & Study**

*Jackson County, MO*

**National Institute of Corrections and U.S. Department of Justice, Opioid Treatment National Best Practice Platforms**

*Washington, DC*

**Green County Jail, Healthcare Evaluation & Study**

*Green County, OH*

**Sacramento County Jail, Programming & Planning**

*Sacramento County, CA*

**Franklin County Jail, Suicide Prevention Study & Systems Analysis**

*Franklin County, OH*

**Borough-Based Jails Project, Master Planning Mental Health Experts**

*New York City, NY*

**Psychiatric Hospital Facility, Mental Health Planning experts**

*Mendocino County, CA*

**Baltimore Therapeutic Treatment Center, Planning & Programming**

*Baltimore, MD*

**Hennepin County Adult Correctional Facility, Master Planning Services**

*Hennepin County, MN*

**Lucas County Jail, Medical and Behavioral Health Program**

*Lucas County, OH*

**Santa Barbara County Jail, Healthcare & Mental Health Needs Assessment**

*Santa Barbara County, CA*

**Arlington County Detention Facility, Medical Assessment & Study**

*Arlington County, VA*

**Dakota County Detention Facility, Healthcare & Mental Health Subject Matter**

*Dakota County, MN*

**Baltimore Pre-Release Unit for Women, Behavioral Health & Population Management**

*Baltimore, MD*

**Rushville Treatment & Detention Center, Planning & Programming Design**

*Rushville, IL*

**Crossroads Juvenile & Training Center**

*New York City, NY*

# PROJECT TEAM



## STRUCTURAL SUBCONSULTANTS



### **BANGALORE PRAKASH, PE**

STRUCTURAL ENGINEER,  
JPS CONSULTING

Prakash has practiced engineering in the United States for over 20 years and has over six years of international experience. Prakash has worked for prestigious firms including BSA LifeStructures, Skidmore Owings and Merrill, NYASE, Lucent Technologies, TRC etc. specializing in the Municipal Buildings, Hospital Designs, Earthquake Engineering, High-Rise Structures, etc. While practicing in California, Prakash was involved in the “Design of Base-isolation System for Los Angeles City Hall”, which to date is the tallest base isolated structure in the world. Prakash provides extensive experience in structural analysis and design.



### **CLAYTON SPRINGER, PE**

STRUCTURAL ENGINEER,  
JPS CONSULTING

Clayton provides years of experience in the structural engineering field with an ability to communicate and follow through to create successful projects. His experience is in complex steel and concrete structures. Clayton’s attention to detail and collaboration make him a great addition to any team.

### **RELEVANT JPS STAFF EXPERIENCE:**

#### **Delaware County Jail**

*Muncie, IN*

#### **Greene County Jail**

*Bloomfield, IN*

#### **Hancock County Jail**

*Greenfield, IN*

#### **Jackson County Judicial**

*Brownstown, IN*

#### **Posey County Jail**

*Mt. Vernon, IN*

#### **Vermillion County Jail**

*Hillsdale, IN*

#### **Hendricks County Jail**

*Danville, IN*

#### **Knox County Jail Addition & Renovation**

*Vincennes, IN*

#### **Greene County Jail**

*Bloomfield, IN*

#### **Posey County Jail**

*Mt. Vernon, IN*

#### **Clay County Jail Addition & Renovation**

*Brazil, IN*

#### **Wabash County Jail Addition & Renovation**

*Wabash, IN*

# APPROACH

---



## INNOVATIVE SOLUTIONS & COLLABORATION

We value the opportunity to participate in designing a new jail that will better serve your community. Our design goals are centered around our understanding of Monroe County and will focus on the ability to create innovative solutions with your community in mind. By utilizing a collaborative process, we will ensure the collective initiatives set forth by the County and project stakeholders are prioritized and incorporated into our design to better serve the physical and mental well-being of those who live and work within the settings of confinement. *We believe that a jail facility can be designed to create therapeutic spaces that enhance rehabilitation and treatment, offering the best chance at reducing recidivism.*

If selected, our team will start your project with knowledge previously gained from our successful completion of justice projects that are similar in size and scope to the proposed project. The understanding and approach, as shown on the following pages, focuses on building consensus, evidence-based healthcare and correctional practice, collaboration, quality control, and communication. Additionally, our team's breadth of knowledge regarding the philosophy and psychology behind rehabilitation will allow the County to gain a more purposeful project that is specifically tailored to your goals and delivered on time and under budget.

## THERAPEUTIC DESIGN & REHABILITATION

A major difference between outdated jails and RQAW's modern, safe designs is the focus on rehabilitation. The deinstitutionalization of the mentally ill and closures of mental hospitals has had a significant impact on county jails. Unfortunately, judges and sheriffs have been faced with having to "lock up" the acute mentally ill in the interest of public safety because there is currently no other solution. For both mental health and substance abuse issues, rehabilitation is vital to the common goal of reducing recidivism. We have seen a substantial impact on these issues through our innovative designs of pre-processing/booking areas and housing blocks as well as the psychology and philosophy regarding assessment, placement, and therapeutic-centered spaces.

### Pre-Processing

RQAW's forward-thinking approach to pre-processing/booking areas provides staff the opportunity for proactive intervention with the ability to conduct physical and mental health assessments for detainees as soon as they enter the jail. Our team will also identify any opportunities to further control the "front-door" to the justice system in hopes of reducing the number and complexity of those with serious physical and mental health needs who enter the jail. Deflecting and diverting those in behavioral health crises away from the criminal justice system and, instead, into the public health system is not only beneficial to the individuals themselves but also provides real fiscal savings to the County.

### In-Custody

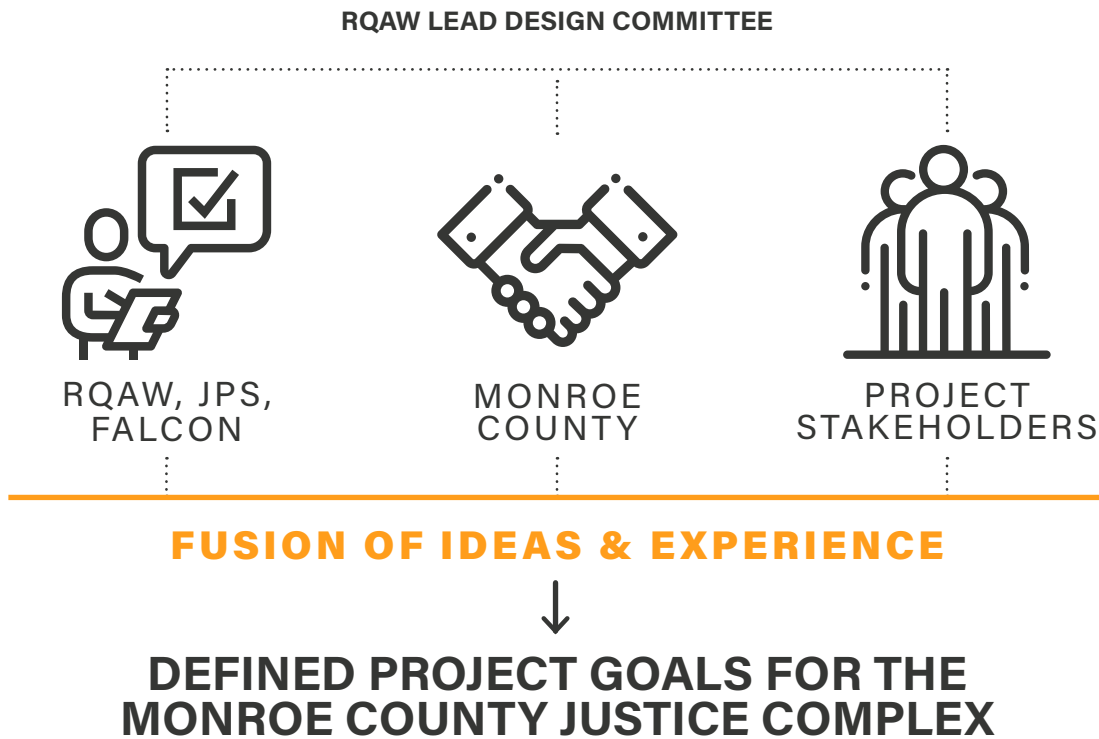
Although deflecting and diverting populations from those in the jail will make a substantial difference to operations, there will be people with serious medical and mental health needs while housed in the jail. Effective screening, assessment, triage, referral, housing, care coordination, and discharge planning require spaces that are designed with those operations in mind. The design of the facility must reflect the segmentation of the population by clinical needs, in addition to security level.

Our philosophy for justice design is centered around the idea that housing spaces should create a continuum of clinical care. Our housing blocks are designed to be flooded with daylight and can include lighting with color tuning to reinforce natural circadian rhythms. The spaces are also painted with multiple warm colors and calming tones to enhance the therapeutic environment, increasing the potential for effective treatment. Drug treatment programs can play a significant role in this effort, so our jails are designed to not only provide classrooms for programming, but also multi-person dormitories that can be shared by individuals in treatment programs. Our designs provide safe spaces for treatment to support rehabilitation, and thereby, promote a reduction in recidivism.

# APPROACH

## BUILD CONSENSUS

RQAW is known for building consensus by giving all stakeholders the ability to participate in the decision-making process. We will hold an intensive one-day charrette that quickly fuses the ideas from Monroe County Commissioners and their stakeholders with our project team's experience and expertise to create defined project goals. By bringing the right people to the table, we are able to arrive at a consensus for highly-developed project goals in a very short period of time.



## DEFINED PROJECT GOALS

Once we have built consensus around the project goals, we begin the design process. Your goals, requirements, and wish list items will be evaluated against all design considerations, including budget. This continued collaboration between Monroe County and the project team will result in a defined project that balances scope, performance, and budget.

During this critical step in project design, RQAW believes in leveraging technology, active listening, and asking questions. This approach gives the County the opportunity to evaluate information quickly and efficiently. Because changes are easy to manage at the beginning of a project but expensive and time consuming later, we will give you all the information you need to make informed, timely choices regarding the defined project. As your highly specialized justice facility designers, we continually evaluate the project through the design, test, and refine process.

# APPROACH

## DESIGN, TEST, REFINE

With the preferred project scope defined, RQAW will leverage our unique experience and in-house expertise to design, test, and refine your project. This effort will lead to the County getting the most scope in an operationally efficient facility for the lowest cost while benefiting the overall health and rehabilitation of justice-involved individuals.



### ADVANCED PLANNING

Our dedicated team of subject-matter experts in both justice design and correctional healthcare consultants will begin pre-design by applying statistical disaggregation methods to identify the population that should be deflected or diverted and work with the County to develop the necessary clinical and legal processes to do so as efficiently as possible. This requires a deep understanding of clinical and custodial operations, along with an appreciation for the mission of the Monroe County Sheriff's Office. RQAW and Falcon will work together to create a space program that reflects true purpose-built design, meeting the needs of those who will work and live within the complex.



### LOW COST OPERATIONS

RQAW is experienced in creating operationally efficient and sustainable spaces that will increase your return on investment. Our team is knowledgeable in material durability and energy-efficient design. We will help to discover the right path for your sustainable complex.



### QUALITY AT EVERY STEP

As project design progresses, we will track your design input through regular owner meetings and Bluebeam Revu software, which documents and timestamps all comments. Shop drawings and markups are reviewed and signed off on during the QA/QC checklist process and can be viewed by you via PDF. This process helps ensure that your vision is being implemented.

## OPTIMUM RESULTS

Through collaboration between Monroe County, RQAW, and Falcon, we will deliver a project that maximizes the desired scope for the lowest possible cost. Our experience will lead you in designing a complex that is operationally efficient and highly functional. With our carefully selected team, you will know that you are getting the most out of your investment. Our approach, as outlined above, has helped us to:

- Focus our Justice designs on enhancing rehabilitation and reducing the recidivism rates.
- Implement re-entry and re-integration models and strategies.
- Create specialized programs and units for acute mental health populations.
- Bid our last five projects within 1% of schematic design cost estimate.
- Complete nearly \$450M in correctional projects within the last five years in Indiana.

# SIMILAR PROJECT EXPERIENCE



## HANCOCK COUNTY JAIL GREENFIELD, IN

RQAW worked closely with the Hancock County Commissioners, County Council, Sheriff, stakeholders, and jail staff to develop the space and operational requirements for two architectural space program options, including the remodel of the existing courthouse, jail, and community corrections facilities and a proposed design for a new jail facility on County-owned farmland, east of Greenfield. The County opted for the new, 117,000-sf jail master planned to allow for projected growth over the next 20 years, including a future Sheriff administration component and adjacent County/commercial development along US 40. The housing pods were designed for 440 beds with the shell space for an additional 136 beds. A future pod was master planned for an additional housing pod for up to 600 beds, and support buildings were also provided for evidence, maintenance, etc. In addition to housing, the jail included facilities for intake, booking, kitchen, laundry, and a small administration component. Estimated construction cost was approximately \$38M. The project was bid under budget and completed in 2022.



**CONTACT**

**JOHN JESSUP**

HANCOCK COUNTY COMMISSIONER

317.339.7265

# SIMILAR PROJECT EXPERIENCE



## HENDRICKS COUNTY JAIL DANVILLE, IN

RQAW conducted a justice study in early 2019 to determine the immediate and future space needs of the Hendricks County jail. The study was conducted with a focus on efficient jail operations and included the entire Sheriff's office. After the study was concluded, RQAW was selected to design the new facility on a greenfield site. Our collaborative approach has led to a highly operational and staffing efficient design that will allow the county to maintain their current staffing levels while doubling the bed count. The new facility will include nearly 600 beds with a focus on creating therapeutic spaces that enhance rehabilitation.



### CONTACT

**SHERIFF BRETT CLARK**  
HENDRICKS COUNTY SHERIFF  
317.745.6269



# SIMILAR PROJECT EXPERIENCE



## HAMILTON COUNTY JAIL NOBLESVILLE, IN

RQAW developed the initial master plan for the Hamilton County Justice Campus. Over the years, RQAW has worked with county officials to update the plan and study components for renovations, additions, and new construction. Most recently, RQAW was tasked with studying the expansion for additional housing. As a result of this study, RQAW was engaged to provide the design for the project.

The 39,000-sf housing pod project incorporated several innovative approaches resulting from the study. First, the pod was designed to include a base bid and then “add alternates” to double the capacity of the housing pod. This enabled the Owner to have a price for their immediate bed need on bid day and then buy additional bed space as the budget would allow. This provided full budget flexibility for the Owner. The housing pod also had several innovative design features, including multiple smaller dayrooms with sight/sound separation for enhanced classification. The pod also maximized staffing efficiency by locating several support spaces like padded cells, isolation, programming, attorney visitation, and medical exam in the housing pod. This minimizes staff involvement and inmate movement to and from these spaces. The project was completed in 2019, and the County received bids that were under the proposed budget.



**CONTACT**

**SHERIFF DENNIS QUAKENBUSH**

HAMILTON COUNTY SHERIFF

317.409.8614

# SIMILAR PROJECT EXPERIENCE



## YAVAPAI COUNTY JUSTICE CENTER **PRESCOTT, AZ**

Falcon experts worked in partnership with Yavapai County to advance programs and justice systems in Yavapai County's secure facilities, focusing on their specific challenges. Yavapai County faced a crisis in their community, whereby those who were in behavioral health crises were being arrested due to manifestations of their mental illnesses or intoxication (i.e., drunk in public, trespassing, disorderly conduct, etc.).

With Falcon's help, the County identified several opportunities for improvements in the behavioral healthcare system, as well as ideas for improving the courts and law enforcement practices. The County then began planning a complex that included a jail, courthouse, and a collocated non-custodial treatment facility that provided police officers with an alternative to detention, and those releasing from custody an opportunity to engage in treatment immediately before returning home. This model not only addresses the serious mental health and addiction needs of the constituents but does so while creating substantial cost-savings to the County and business opportunities for local providers. Major Completion is on schedule for the end of 2022.



### **CONTACT**

**DAVID McATEE**

PUBLIC INFORMATION OFFICER, YAVAPAI COUNTY  
BOARD OF SUPERVISORS  
928.442.5509

# SIMILAR PROJECT EXPERIENCE



## FRANKLIN COUNTY SHERIFF'S OFFICE JAIL STUDY **COLUMBUS, OH**

Falcon has a long history working with the Franklin County Sheriff's Office, providing extensive program and facility assessment, and training, and recently delivered workshops on suicide prevention to approximately 300 deputies. Franklin County called upon Falcon to provide expertise in the planning and design of their 405,000-square-foot facility for men and women experiencing incarceration in the County. Eighty percent of the beds in the new facility were designated for medical, mental health, and substance use disorder services, with a strong focus on elements of trauma-informed design and gender-responsive programming. Falcon and the Sheriff's Office are committed to providing spaces that support healing, reduce toxic stress, and focus on restorative models of mental wellness for those who live and work within the facility.

A true example of purpose-built design, Falcon worked with the County to define the 'purpose.' Using principles of evidence-based design to normalize the experience for those entering the justice system, Falcon provided the study data necessary to translate psychological tenets into architectural spaces. Falcon experts worked with the architect to develop the program and architectural design, and continue to provide support and consultation for evidenced-based practices.



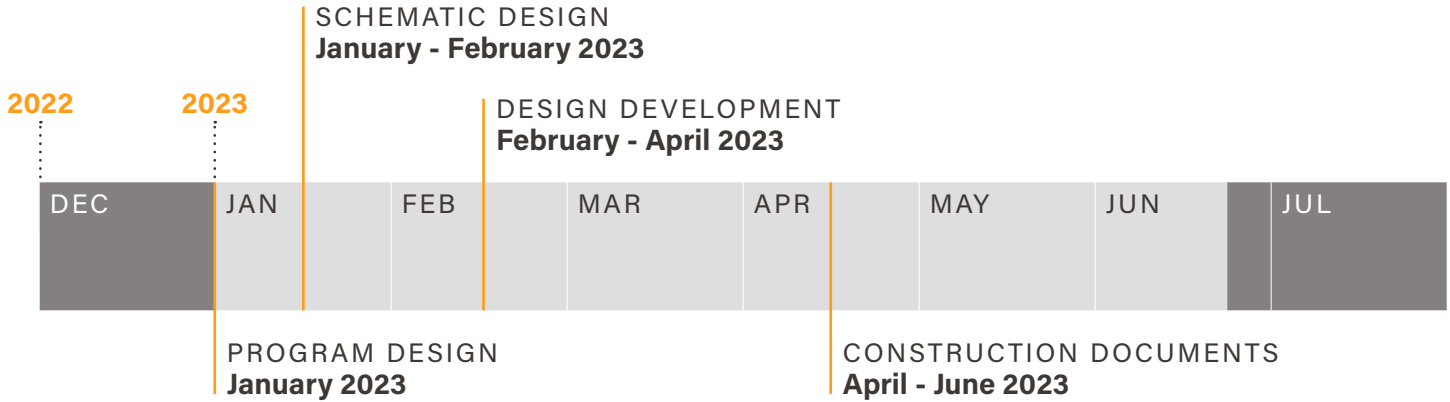
### **CONTACT**

**SHERIFF DALLAS BALDWIN**  
FRANKLIN COUNTY SHERIFF  
614.525.3333

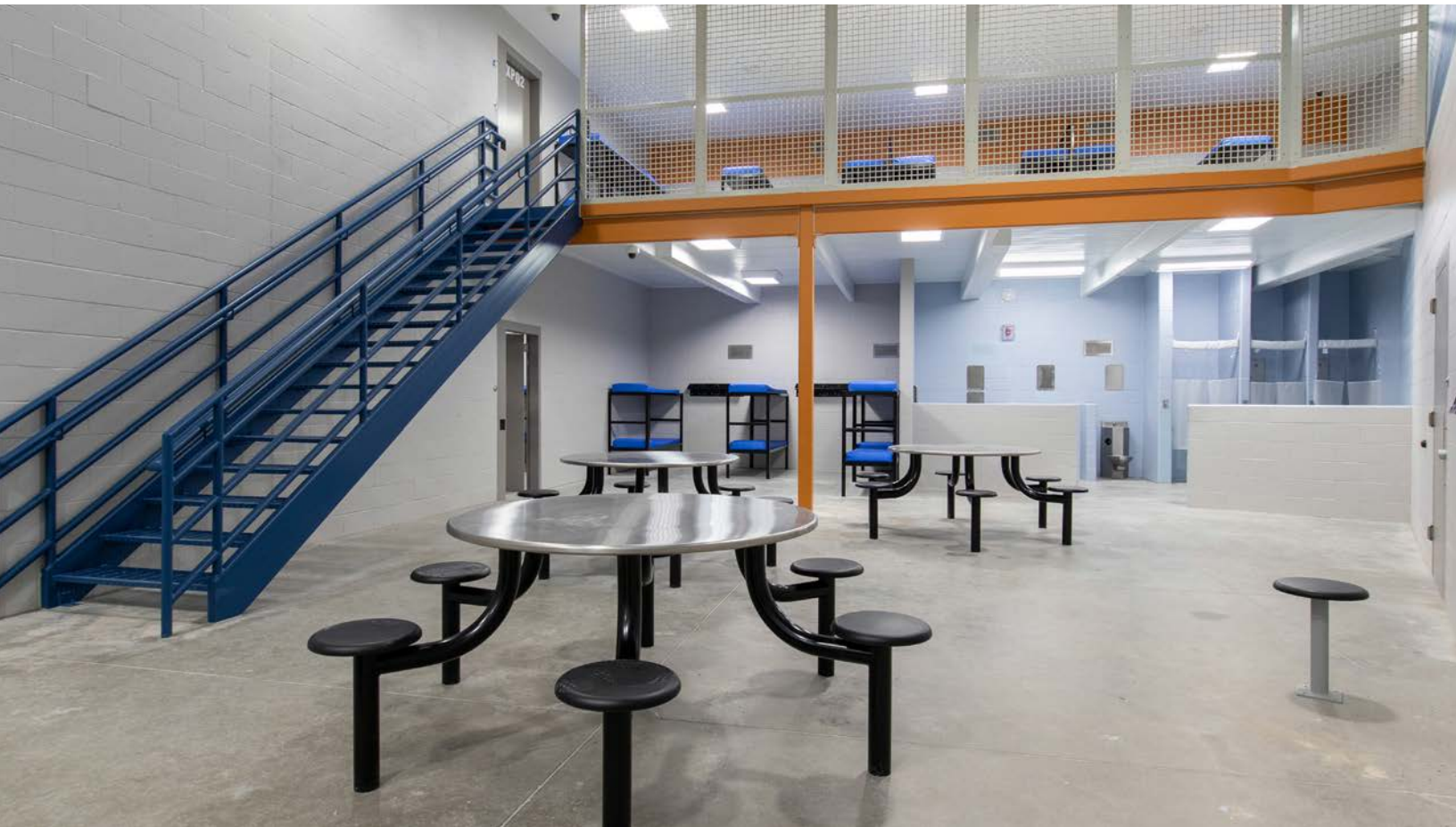
# ADDITIONAL INFORMATION

## PROPOSED PROJECT TIMELINE

If selected, RQAW will work closely with Monroe County and all project stakeholders to meet your schedule and preferred financing deadline to keep your project on time and within budget. RQAW has the capacity to meet an accelerated design schedule, if required.



**Responsible Staff:** Eric Weflen, AIA, NCARB



## PROFESSIONAL LIABILITY

RQAW carries a professional liability policy with limits of \$5,000,000 per claim and \$10,000,000 aggregate.