

# ACCESSIBLE TRANSPORTATION AND MOBILITY PRINCIPLES

---

*A STEP IN THE RIGHT DIRECTION*

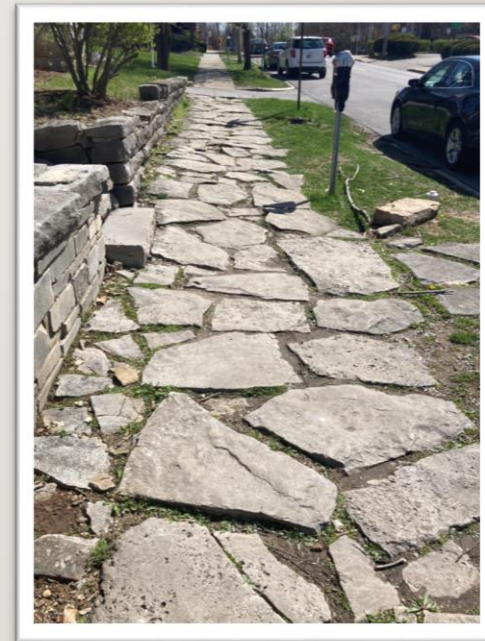
# ADVANCING TRANSPORTATION EQUITY

---

## A WALK TO BRYAN PARK



## A DOWNTOWN CHALLENGE



# ACCESSIBLE TRANSPORTATION AND MOBILITY PRINCIPLES

## STATEMENT OF PURPOSE

---

- To guide how the City of Bloomington plans and implements accessible transportation and mobility considerations for persons with disabilities.
- To inform city-wide improvements and developments of public spaces so that legislation and infrastructure truly reflect the needs of our diverse community.

# COUNCIL FOR COMMUNITY ACCESSIBILITY

---



- A volunteer group that advocates for the interests of people with disabilities, promotes awareness of the challenges faced by people with disabilities, and works to develop solutions to problems of accessibility in the community.
- CCA Transportation and Mobility Committee June 2021 workshop: *Increasing Pedestrian Accessibility Opportunities for All*

# TECHNICAL ASSISTANCE FROM HEALTH BY DESIGN

---



We are grateful for the support of a Complete Street Technical Assistance award from Health By Design that funded guidance on this project from their staff:

- Marjorie Hennessey, Active Living Program Manager
- Taylor Firestine, Walk & Bike Program Coordinator

# ATMP STEERING COMMITTEE

---



- Deborah Myerson, Chair
- Michael Shermis, staff, Community and Family Resources Department, City of Bloomington
- Michelle Hahn
- Kristen King
- James McClary
- Michelle Moss
- Barbara Salisbury

# A COLLABORATIVE EFFORT

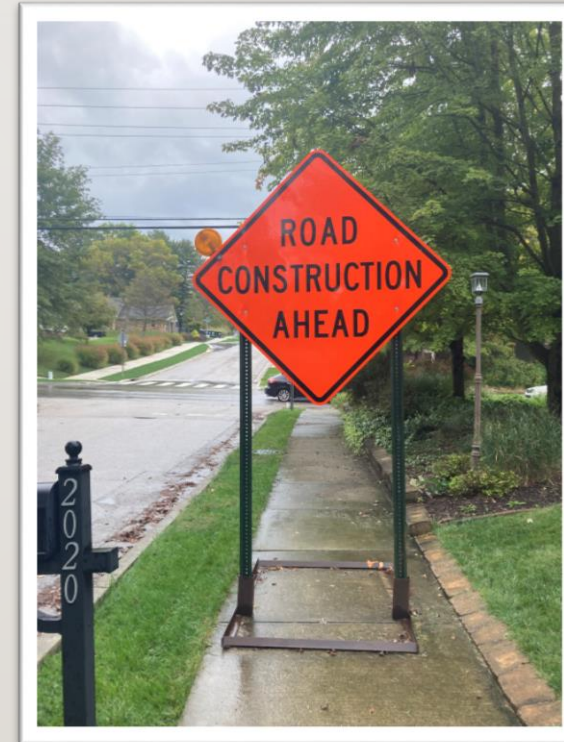
---

- Office of Mayor John Hamilton, City of Bloomington
- Beverly Calender-Anderson, Community and Family Resources Department
- Scott Robinson, Beth Rosenbarger, and Mallory Rickbeil, Planning and Transportation Department
- Andrew Cibor, Engineering Department, City of Bloomington
- Councilmember Matt Flaherty
- Councilmember Isabel Piedmont-Smith
- Councilmember Ron Smith, City of Bloomington
- Transportation and Mobility Committee, Council for Community Accessibility, City of Bloomington

# PRINCIPLE I: ADOPT INCLUSIVE PROCESSES

---

- Establish an equitable process
- Involve people with disabilities in transportation decisions
- Seek meaningful input and a fully inclusive process





# PRINCIPLE 2: SEEK EQUITABLE OUTCOMES

---



- Goal: an equity-based transportation network
- Connect people with disabilities to places where they can live, work, and play.

# PRINCIPLE 3: PURSUE PLANNING

---

- Implement the ADA Transition Plan to improve accessibility.
- Details how the City will ensure all of its facilities, services, programs, and activities in the public right-of-way are accessible to all individuals.



# PRINCIPLE 4: PRIORITIZE SAFE ACCESS

---



Design and repair sidewalks, streets, public rights-of-way, and other transportation facilities to prioritize safety and reduce risk for the most vulnerable users

# PRINCIPLE 5: ANTICIPATE AND REPORT IMPACTS

---

- Evaluate the impacts of transportation decisions on people with disabilities
- Review and refine the implementation of these Principles



# MORE IN THE PRINCIPLES

---

- Recommendations on implementation
- Indicators for accessibility
- Examples of accessibility in Complete Streets policies
- Glossary & resources
- **FULL DOCUMENT:**  
<https://tinyurl.com/ATMPrinciples>



# NEXT STEPS

---

Adopt and implement the Accessible Transportation and Mobility Principles to accompany the city's ADA Transition Plan

