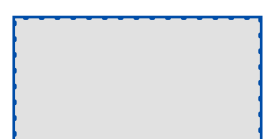
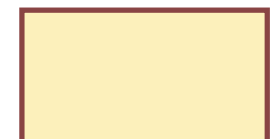

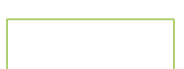
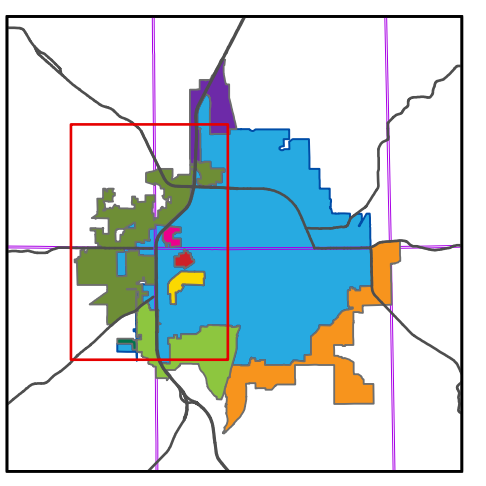


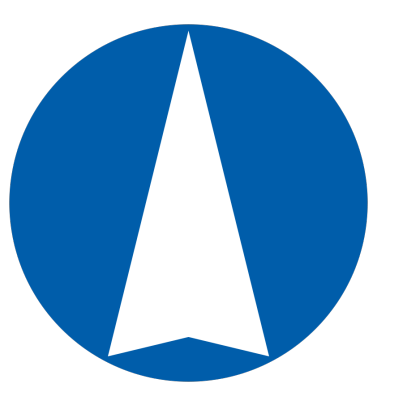
Legend

-  Municipal Boundary
-  Proposed Annexation Area 1A
-  Proposed Annexation Areas
-  Parcels within Proposed Annexation Areas

Parcel features sourced from Monroe County Government GIS Data



April 27, 2021



Produced: 4/27/2021
 Project: AnnexAreaMaps1to2021
 File: AnnexProposedArea1ADP



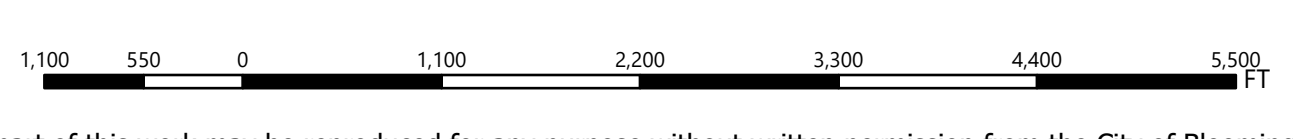
Proposed Annexation Areas

Area 1A - South-West Bloomington (A)

This map was produced by the City of Bloomington GIS, for use by the City and general public as map information. The planimetric information is based on aerial orthoregistry flown in March 2016.

Supplemental updates are made from development drawings, plats, and other sources. The accuracy of information contained in this document is based on National Mapping Standards, however it is NOT warranted.

The Corporation boundary reflects annexations effective as of the print date on this map.



No part of this work may be reproduced for any purpose without written permission from the City of Bloomington