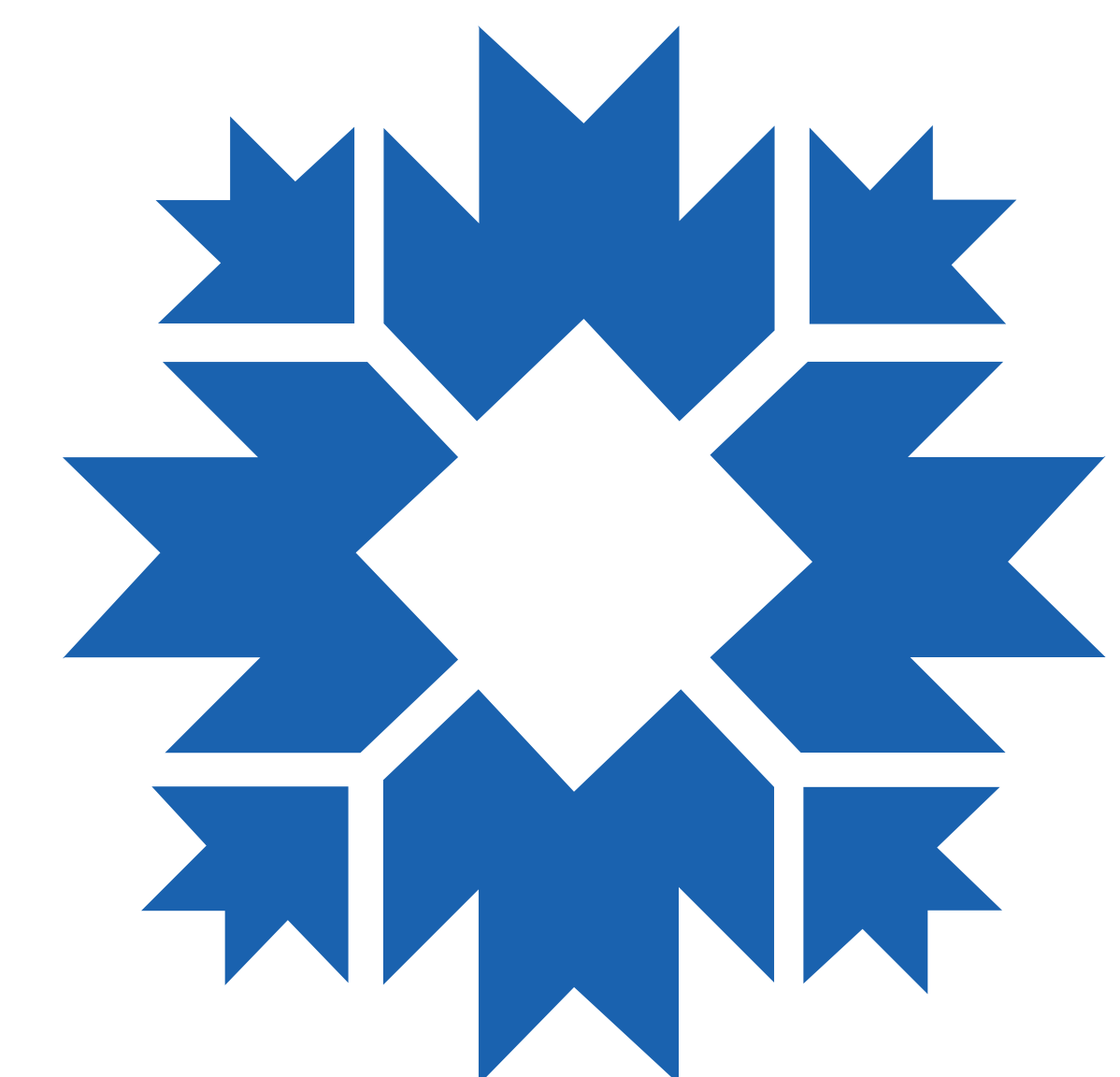
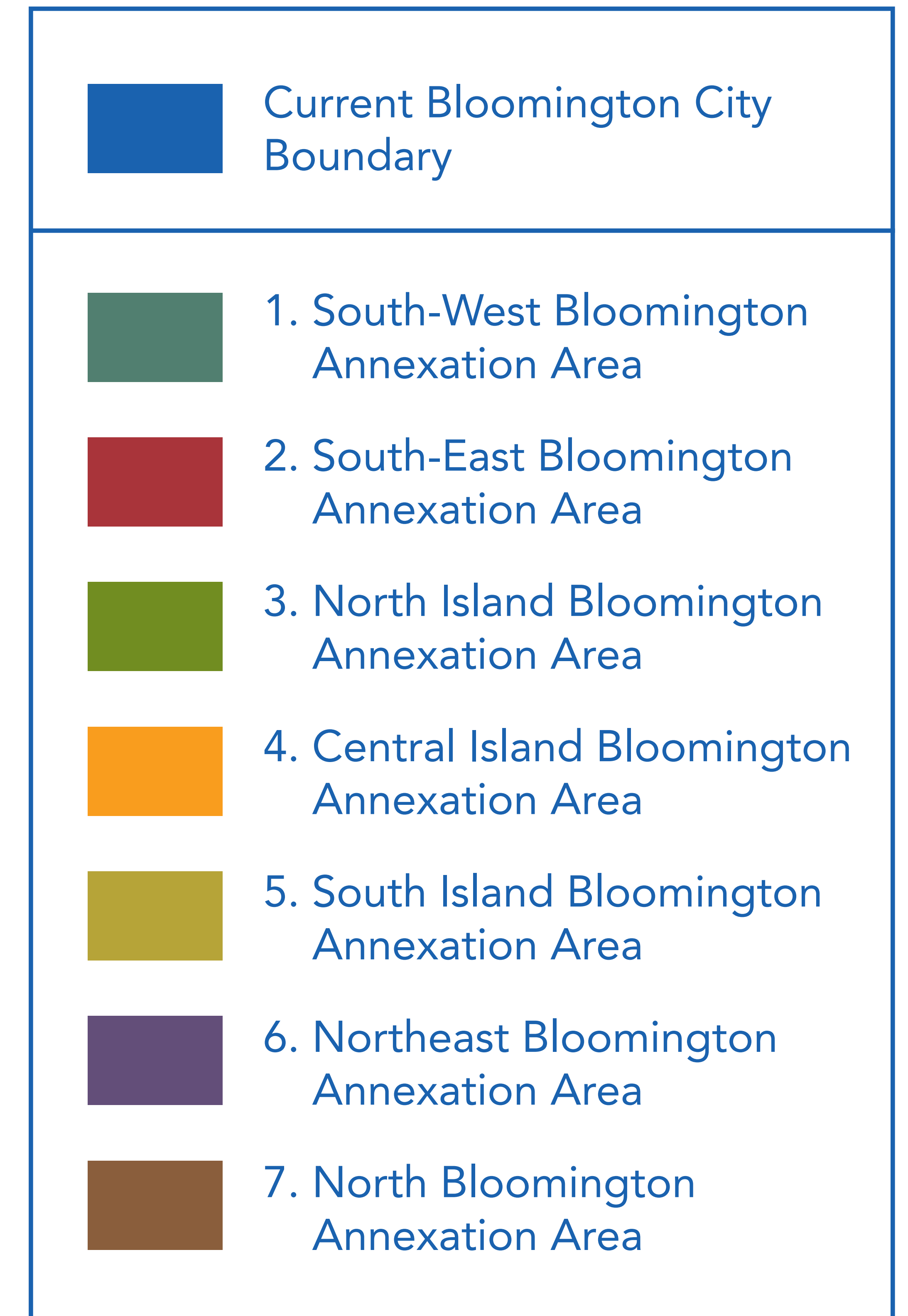
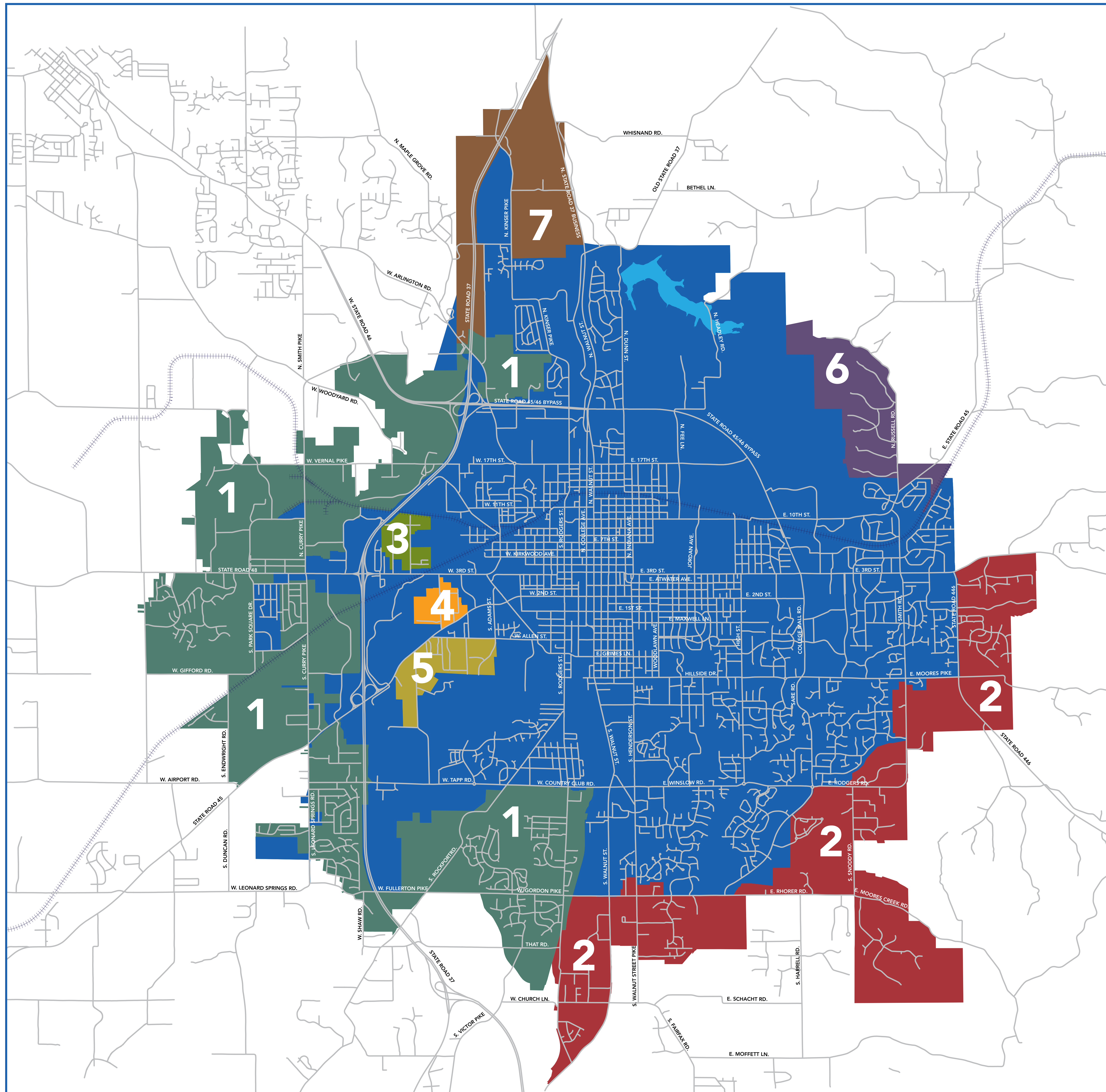
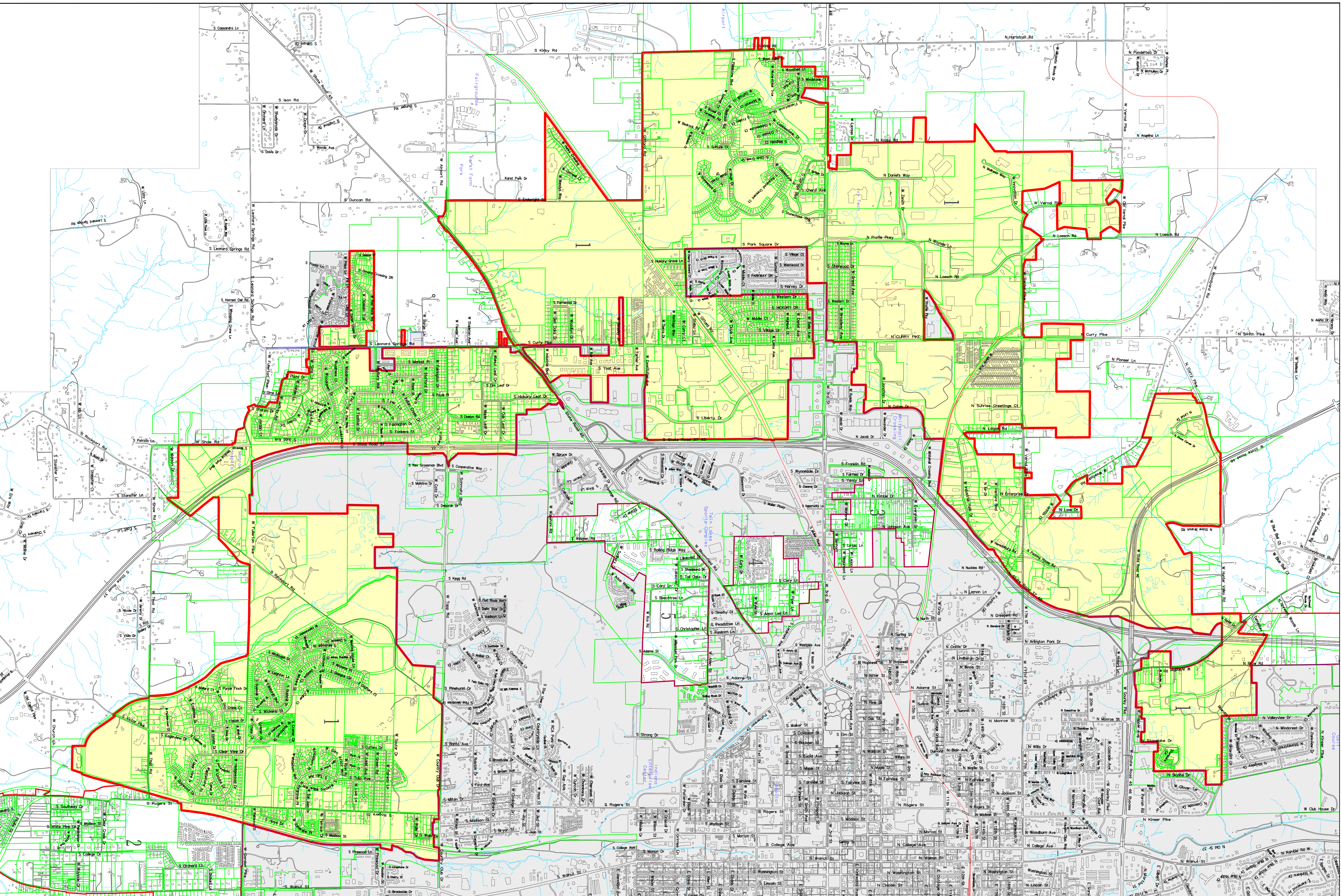


# Proposed Annexation Area (effective 2020)


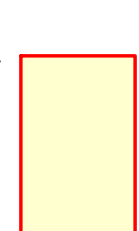
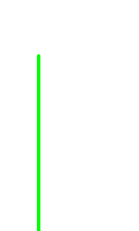


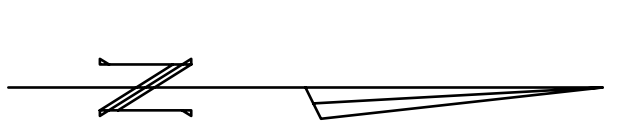
CITY OF BLOOMINGTON



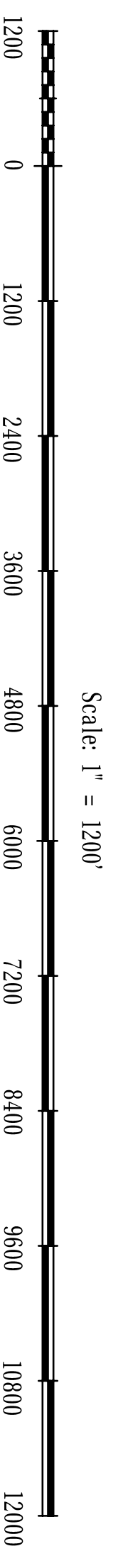


**Legend**

-  Corporation Boundary
-  Proposed Annexation Areas
-  Parcel Boundary

  
**City of Bloomington**  
 Controller's Office  
 Geographic Information System

TanxplanDP (prop highlight)
Feb 3, 2017



**Proposed Annexation Areas 2017**  
**Area 1 - South-West Bloomington**

The map was produced by the City of Bloomington GIS for use by the City and general public as map information. The geographic and planimetric information is based on aerial photography from March 1991 and March 1992. Labels from aerial photography took place in April 1996, April 2003, March 2006, and August 2007. The map is not intended to be used for engineering, surveying, or other purposes. The accuracy of information contained in this document is based on National Mapping Standards, however it is NOT warranted.

The Corporation boundary reflects annexations effective January 1, 2017.  
 Information and Technology Services Department  
 2 January 2017

Important Notice Regarding Utilities:  
 The applications of underground utilities are shown schematically. For live water, sewer, gas, telephone, and electric located, call 1-800-385-5544. To have CAD or television located, call 812-332-9185.